

Recombinant Rat Cd80 Protein (Vla30-Gln248), C-His tagged

Cat. No. Cd80-6836R **Lot. No.** (See product label)

SPECIFICATION

Product Overview	Recombinant rat Cd80 (Vla30-Gln248) fused with the C-terminal His tag was expressed in mammalian cells.
Species	Rat
Source	Mammalian Cells
ProteinLength	Vla30-Gln248
Description	Predicted to enable coreceptor activity. Involved in positive regulation of T cell proliferation. Located in cell surface. Used to study adult T-cell leukemia; anti-basement membrane glomerulonephritis; high grade glioma; and periodontal disease. Biomarker of kidney failure. Human ortholog (s) of this gene implicated in type 1 diabetes mellitus. Orthologous to human CD80 (CD80 molecule).
Form	Lyophilized powder/frozen liquid
Molecular Mass	24.09 kDa
Purity	> 90 % as determined by SDS-PAGE
Notes	For research use only.
Storage	Use a manual defrost freezer and avoid repeated freeze thaw cycles. Store at 2 to 8 centigrade for one week. Store at -20 to -80 centigrade for twelve months from the

 Tel: 1-631-559-9269 1-516-512-3133

 Email: info@creative-biomart.com  Fax: 1-631-938-8127

 45-1 Ramsey Road, Shirley, NY 11967, USA

date of receipt.

Storage Buffer Supplied as solution form in PBS or lyophilized from PBS.

Reconstitution Reconstitute in sterile water for a stock solution.

Shipping They are shipped out with dry ice/blue ice unless customers require otherwise.

GENE INFORMATION

Gene Name Cd80 Cd80 molecule [*Rattus norvegicus* (Norway rat)]

Official Symbol Cd80

Synonyms Cd80; Cd80 molecule; B7-1; T-lymphocyte activation antigen CD80; CD80 antigen; CD80-like; Cd80 a rat homolog of the human CD28/CTLA - 4 ligand (B7-1)

Gene ID 25408

mRNA Refseq NM_012926

Protein Refseq NP_037058

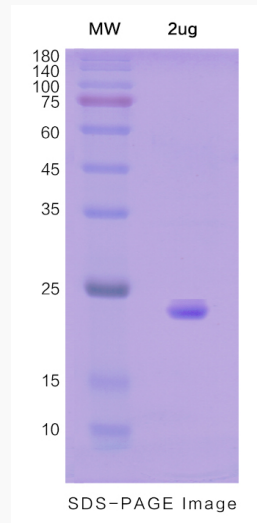
UniProt ID G3V671

 Tel: 1-631-559-9269 1-516-512-3133

 Email: info@creative-biomart.com  Fax: 1-631-938-8127

 45-1 Ramsey Road, Shirley, NY 11967, USA

SDS-PAGE



 Tel: 1-631-559-9269 1-516-512-3133

 Email: info@creative-biomart.com  Fax: 1-631-938-8127

 45-1 Ramsey Road, Shirley, NY 11967, USA