

## Recombinant Mouse CD86 Antigen

**Cat. No.** Cd86-1706M    **Lot. No.** (See product label)

### SPECIFICATION

<b>Species</b>	Mouse
<b>Source</b>	Sf21 Cells
<b>Description</b>	<p>B7-1 and B7-2, together with their receptors CD28 and CTLA-4, constitute one of the dominant costimulatory pathways that regulate T- and B-cell responses. Although both CTLA-4 and CD28 can bind to the same ligands, CTLA-4 binds to B7-1 and B7-2 with a 20 - 100 fold higher affinity than CD28 and is involved in the down-regulation of the immune response. B7-1 is expressed on activated B cells, activated T cells, and macrophages. B7-2 is constitutively expressed on interdigitating dendritic cells, Langerhans cells, peripheral blood dendritic cells, memory B cells, and germinal center B cells. Additionally, B7-2 is expressed at low levels on monocytes and can be up-regulated through interferon <math>\gamma</math>. B7-1 and B7-2 are both members of the immunoglobulin superfamily. Human B7-2 and B7-1 share 26% amino acid identity. Human and mouse B7-2 share 50% amino acid identity. However, it has been observed that both human and mouse B7-1 and B7-2 can bind to either human or mouse CD28 and CTLA-4, suggesting that there are conserved amino acids which form the B7-1/B7-2/CD28/CTLA-4 critical binding sites.</p>
<b>Molecular Weight</b>	<p>The predicted molecular weight of Recombinant Mouse B7-2 is Mr 51.8 kDa. However, the actual molecular weight as observed by migration on SDS Page is Mr 60-65 kDa.</p>
<b>State Of Matter</b>	Lyophilized.

 Tel: 1-631-559-9269    1-516-512-3133

 Email: [info@creative-biomart.com](mailto:info@creative-biomart.com)     Fax: 1-631-938-8127

 45-1 Ramsey Road, Shirley, NY 11967, USA

<b>Purity</b>	>95% by SDS Page and analyzed by silver stain.
<b>Endotoxin</b>	<0.1 ng per 1 g as determined by the LAL method.
<b>Storage And Stability</b>	This lyophilized protein is stable for six to twelve months when stored desiccated at -20°C to -70°C. After aseptic reconstitution, this protein may be stored at 2°C to 8°C for one month or at -20°C to -70°C in a manual defrost freezer. Avoid Repeated Freeze Thaw Cycles. See Product Insert for exact lot specific storage instructions.

## GENE INFORMATION

<b>Gene Name</b>	Cd86 CD86 antigen [ <i>Mus musculus</i> ]
<b>Synonyms</b>	Cd86; CD86 antigen; B7; B70; MB7; B7-2; B7.2; CLS1; Ly58; ETC-1; Ly-58; MB7-2; Cd28I2; TS/A-2; OTTMUSP00000015940; activation B7-2 antigen; T-lymphocyte activation antigen CD86; early T cell costimulatory molecule-1
<b>Gene ID</b>	12524
<b>mRNA Refseq</b>	NM_019388
<b>Protein Refseq</b>	NP_062261
<b>UniProt ID</b>	P42082
<b>Chromosome Location</b>	16 26.9 cM
<b>Pathway</b>	Allograft rejection; Autoimmune thyroid disease; Cell adhesion molecules (CAMs); Graft-versus-host disease; Systemic lupus erythematosus; Toll-like receptor signaling

 Tel: 1-631-559-9269 1-516-512-3133

 Email: [info@creative-biomart.com](mailto:info@creative-biomart.com)  Fax: 1-631-938-8127

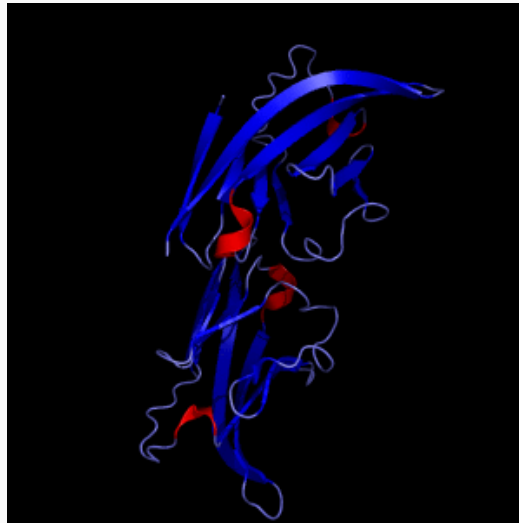
 45-1 Ramsey Road, Shirley, NY 11967, USA

pathway; Type I diabetes mellitus

**Function**

receptor activity

**PDB rendering based  
on 1i85.**



 Tel: 1-631-559-9269 1-516-512-3133

 Email: [info@creative-biomart.com](mailto:info@creative-biomart.com)  Fax: 1-631-938-8127

 45-1 Ramsey Road, Shirley, NY 11967, USA