

Recombinant Mouse Cd86 protein, His & T7-tagged

Cat. No. Cd86-7781M Lot. No. (See product label)

SPECIFICATION

| | |
|-------------------------|---|
| Product Overview | Recombinant Mouse Cd86 aa. (Tyr37~Ser272 (Accession # P42082)) fused with N-terminal His & T7 tag was produced in E. coli cells. |
| Species | Mouse |
| Source | E.coli |
| ProteinLength | Tyr37~Ser272 |
| Form | Freeze-dried powder |
| Molecular Mass | Predicted Molecular Mass: 30.6kDa |
| Endotoxin | <1.0EU per 1g (determined by the LAL method) |
| Purity | >95% |
| Characteristic | The isoelectric point is 7.7. |
| Applications | SDS-PAGE; WB; ELISA; IP |
| Stability | The thermal stability is described by the loss rate. The loss rate was determined by accelerated thermal degradation test, that is, incubate the protein at 37°C for 48h, and no obvious degradation and precipitation were observed. The loss rate is less than 5% within the expiration date under appropriate storage condition. |

 Tel: 1-631-559-9269 1-516-512-3133

 Email: info@creative-biomart.com  Fax: 1-631-938-8127

 45-1 Ramsey Road, Shirley, NY 11967, USA

| | |
|-----------------------|--|
| Storage | Avoid repeated freeze/thaw cycles. Store at 2-8°C for one month. Aliquot and store at -80°C for 12 months. |
| Storage buffer | Supplied as lyophilized form in PBS, pH7.4, containing 5% trehalose, 0.01% sarcosyl |
| Reconstitution | Reconstitute in sterile PBS, pH7.2-pH7.4 |

GENE INFORMATION

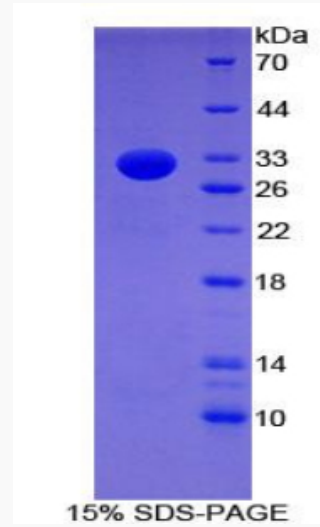
| | |
|------------------------|---|
| Gene Name | Cd86 CD86 antigen [<i>Mus musculus</i> (house mouse)] |
| Official Symbol | Cd86 |
| Synonyms | Cd86; CD86 antigen; B7; B70; MB7; B7-2; B7.2; CLS1; Ly58; ETC-1; Ly-58; MB7-2; Cd28l2; TS/A-2; T-lymphocyte activation antigen CD86; activation B7-2 antigen; early T cell costimulatory molecule-1 |
| Gene ID | 12524 |
| mRNA Refseq | NM_019388.3 |
| Protein Refseq | NP_062261.3 |
| UniProt ID | P42082 |


 Tel: 1-631-559-9269 1-516-512-3133

 Email: info@creative-biomart.com  Fax: 1-631-938-8127


 45-1 Ramsey Road, Shirley, NY 11967, USA

SDS-PAGE



 Tel: 1-631-559-9269 1-516-512-3133

 Email: info@creative-biomart.com  Fax: 1-631-938-8127

 45-1 Ramsey Road, Shirley, NY 11967, USA