

Recombinant Mouse Cdcp1 protein, His-Avi-tagged, Biotinylated

Cat. No. Cdcp1-260M **Lot. No.** (See product label)

SPECIFICATION

Product Overview	Biotinylated Recombinant Mouse Cdcp1 protein(Q5U462)(Arg25-Ala667), fused with C-terminal His and Avi tag, was expressed in HEK293.
Species	Mouse
Source	HEK293
ProteinLength	Arg25-Ala667
Tag	C-His-Avi
Conjugation/Label	Biotin
Form	Lyophilized from 0.22µm filtered solution in PBS (pH 7.4). Normally 5% trehalose is added as protectant before lyophilization.
Bio-activity	Anti-CDCP1 Antibody captured on CM5 Chip via Protein A can bind Biotinylated Mouse CDCP-1, His Tag with an affinity constant of 0.45 µM as determined in SPR assay (Biacore T200).
Molecular Mass	The protein has a predicted MW of 75.3 kDa. Due to glycosylation, the protein migrates to 80-100 kDa based on Tris-Bis PAGE result.
Endotoxin	Less than 1EU per µg by the LAL method.

 Tel: 1-631-559-9269 1-516-512-3133

 Email: info@creative-biomart.com  Fax: 1-631-938-8127

 45-1 Ramsey Road, Shirley, NY 11967, USA

Purity	> 95% as determined by Tris-Bis PAGE;> 95% as determined by HPLC
Storage	Reconstituted protein stable at -80°C for 12 months, 4°C for 1 week. Use a manual defrost freezer and avoid repeated freeze-thaw cycles.
Reconstitution	Centrifuge tubes before opening. Reconstituting to a concentration more than 100 µg/ml is recommended. Dissolve the lyophilized protein in distilled water.
Conjugation	Biotin

GENE INFORMATION

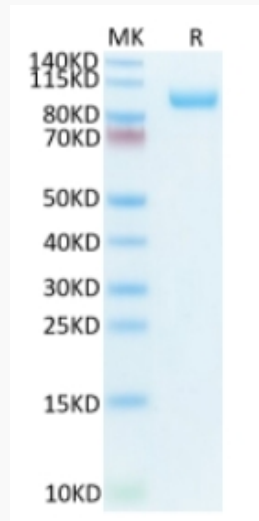
Gene Name	Cdcp1 CUB domain containing protein 1 [Mus musculus]
Official Symbol	Cdcp1
Synonyms	CDCP1; CUB domain containing protein 1; CUB domain-containing protein 1; membrane glycoprotein gp140; transmembrane and associated with src kinases; AA409659; 9030022E12Rik; E030027H19Rik;
Gene ID	109332
mRNA Refseq	NM_133974
Protein Refseq	NP_598735

 Tel: 1-631-559-9269 1-516-512-3133

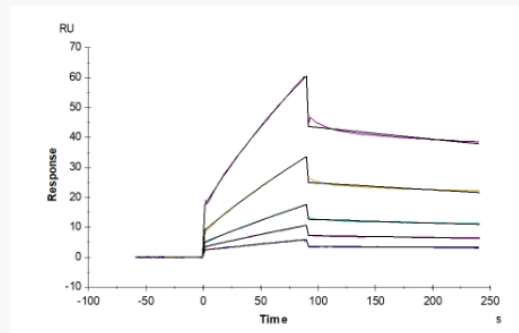
 Email: info@creative-biomart.com  Fax: 1-631-938-8127

 45-1 Ramsey Road, Shirley, NY 11967, USA

Tris-Bis PAGE



SPR Data



 Tel: 1-631-559-9269 1-516-512-3133

 Email: info@creative-biomart.com  Fax: 1-631-938-8127

 45-1 Ramsey Road, Shirley, NY 11967, USA