

Recombinant Mouse Cdcp1 protein, His-tagged

Cat. No. Cdcp1-7424M Lot. No. (See product label)

SPECIFICATION

Product Overview	Recombinant Mouse Cdcp1 protein(Q5U462)(30-666aa), fused with C-terminal His tag, was expressed in HEK293.
Species	Mouse
Source	HEK293
ProteinLength	30-666aa
Tag	C-His
Form	Lyophilized from a 0.2 µm filtered 20 mM Tris-HCl, 0.5 M NaCl, 6% Trehalose, pH 8.0
Bio-activity	Measured by its binding ability in a functional ELISA. Immobilized Mouse Cdcp1 at 2 µg/mL can bind Anti-CDCP1 recombinant antibody, the EC50 is 0.6397-0.8369 ng/ml.
Molecular Mass	73.2 kDa
Endotoxin	Less than 1.0 EU/ug as determined by LAL method.
Purity	Greater than 95% as determined by SDS-PAGE.
Storage	Store at -20°C/-80°C upon receipt, aliquoting is necessary for mutiple use. Avoid repeated freeze-thaw cycles.

 Tel: 1-631-559-9269 1-516-512-3133

 Email: info@creative-biomart.com  Fax: 1-631-938-8127

 45-1 Ramsey Road, Shirley, NY 11967, USA

Reconstitution

We recommend that this vial be briefly centrifuged prior to opening to bring the contents to the bottom. Please reconstitute protein in deionized sterile water to a concentration of 0.1-1.0 mg/mL. We recommend to add 5-50% of glycerol (final concentration) and aliquot for long-term storage at -20°C/-80°C.

AA Sequence

```
SEIALPQRSGVTVSIKLGNPALPVKICYIVMSRQHITELIIRPGERKSFTFSCSNPEKHF
VLKIEKNIDCMMSGPCPFGEVHLQPSTSELPILNRTFIWDVRAHKSIGLELQFATPRLR
QIGPGESCADGVTHSISGHIDATEVRIGTFCSNGTVSRIKMQEGVKMALHLPWFHRR
NVSGFSIANRSSIKRLCIIESVFEGEGSATLMSANYPGGFPEDELMTWQFVVAHLR
ASVSFLNFNVSNCERKEERVEYYIPGSTTNPEVFRLEDKQPGNMAGNFNLSLQGCD
QDAQSPGILRLQFQVLVQR PQDES NKTYMVDLSRERTMSLTIEPRPVKHGRRFVPG
CFVCLESRTCSTNVTLTAGSIHKISFLCDDLTRLWVNVEKTLSCLDHRYCYRQSFKL
QVPDYILQLPVQLHDFSWKLLVPKDKLSLMLVPGQKLQQHTQERPCNTSFGYHVTS
TTPGQDLYFGSFCSSGGSIEKIQVKQNSSVTLRAYAPSFQQEVSKQGLIVSYTPYFKE
EGIFTVTPDTKNKVYL RSPN WDRGLPALSSVSWNISVPSNQVACLTVLKERSGLACQ
SGRAFMIIEQQSRAEEIFSLEEEVL PKPSFHHSFWVNISNCSPMNGKQLDLLFWV
TLTPRTVDL
```

GENE INFORMATION

Gene Name

Cdcp1 CUB domain containing protein 1 [*Mus musculus*]

Official Symbol

Cdcp1

Synonyms

CDCP1; CUB domain containing protein 1; CUB domain-containing protein 1; membrane glycoprotein gp140; transmembrane and associated with src kinases; AA409659; 9030022E12Rik; E030027H19Rik;

Gene ID

109332

 Tel: 1-631-559-9269 1-516-512-3133

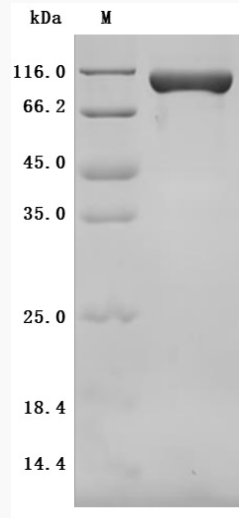
 Email: info@creative-biomart.com  Fax: 1-631-938-8127

 45-1 Ramsey Road, Shirley, NY 11967, USA

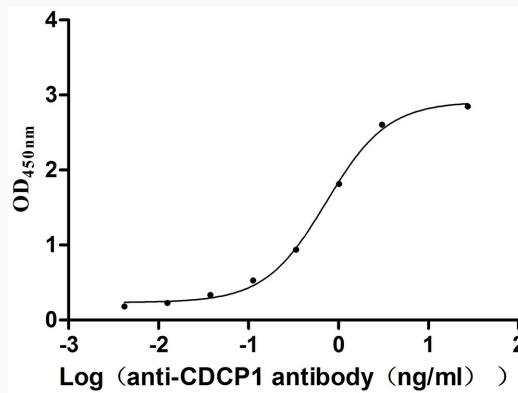
mRNA Refseq [NM_133974](#)

Protein Refseq [NP_598735](#)

SDS-PAGE



Activity



 Tel: 1-631-559-9269 1-516-512-3133

 Email: info@creative-biomart.com  Fax: 1-631-938-8127

 45-1 Ramsey Road, Shirley, NY 11967, USA