

Recombinant Mouse Cdcp1 protein, His-tagged

Cat. No. Cdcp1-7855M Lot. No. (See product label)

SPECIFICATION

Product Overview	Recombinant Mouse Cdcp1 protein(Q5U462)(Arg25-Ala667), fused with C-terminal His tag, was expressed in HEK293.
Species	Mouse
Source	HEK293
ProteinLength	Arg25-Ala667
Tag	C-His
Form	Lyophilized from 0.22µm filtered solution in PBS (pH 7.4). Normally 5% trehalose is added as protectant before lyophilization.
Molecular Mass	The protein has a predicted MW of 73.6 kDa. Due to glycosylation, the protein migrates to 80-100 kDa based on Tris-Bis PAGE result.
Endotoxin	Less than 1EU per µg by the LAL method.
Purity	> 95% as determined by Tris-Bis PAGE;> 95% as determined by HPLC
Storage	Reconstituted protein stable at -80°C for 12 months, 4°C for 1 week. Use a manual defrost freezer and avoid repeated freeze-thaw cycles.
Reconstitution	Centrifuge tubes before opening. Reconstituting to a concentration more than 100

 Tel: 1-631-559-9269 1-516-512-3133

 Email: info@creative-biomart.com  Fax: 1-631-938-8127

 45-1 Ramsey Road, Shirley, NY 11967, USA

µg/ml is recommended. Dissolve the lyophilized protein in distilled water.

GENE INFORMATION

Gene Name Cdcp1 CUB domain containing protein 1 [*Mus musculus*]

Official Symbol Cdcp1

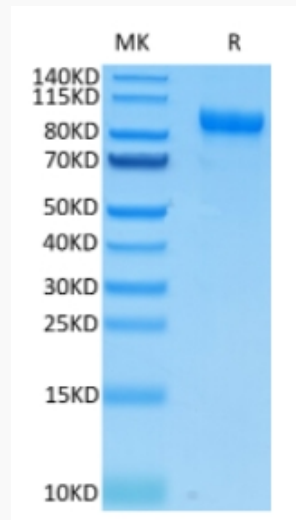
Synonyms CDCP1; CUB domain containing protein 1; CUB domain-containing protein 1; membrane glycoprotein gp140; transmembrane and associated with src kinases; AA409659; 9030022E12Rik; E030027H19Rik;

Gene ID 109332

mRNA Refseq NM_133974

Protein Refseq NP_598735

Tris-Bis PAGE



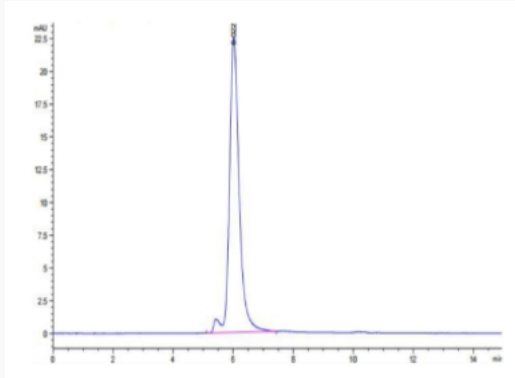
Tel: 1-631-559-9269 1-516-512-3133

Email: info@creative-biomart.com Fax: 1-631-938-8127

45-1 Ramsey Road, Shirley, NY 11967, USA



SEC-HPLC



Tel: 1-631-559-9269 1-516-512-3133

Email: info@creative-biomart.com Fax: 1-631-938-8127

45-1 Ramsey Road, Shirley, NY 11967, USA