

## Recombinant Rat Cdh2 protein, His-tagged

**Cat. No.** Cdh2-7025R    **Lot. No.** (See product label)

### SPECIFICATION

|                         |  |
|-------------------------|--|
| <b>Product Overview</b> | Recombinant Rat Cdh2 aa. (Ser563~Ser685 (Accession # Q9Z1Y3)) fused with N-terminal His tag was produced in E. coli cells. |
| <b>Species</b>          | Rat  |
| <b>Source</b>           | E.coli   |
| <b>ProteinLength</b>    | Ser563~Ser685  |
| <b>Description</b>      | Cell-cell adhesion molecule; may play a role in smooth muscle cell migration and adhesion in response to injury.           |
| <b>Form</b>             | Freeze-dried powder  |
| <b>Molecular Mass</b>   | 18kDa as determined by SDS-PAGE reducing conditions.   |
| <b>Endotoxin</b>        | <1.0EU per 1ug (determined by the LAL method)  |
| <b>Purity</b>           | >95%   |
| <b>Characteristic</b>   | The isoelectric point is 4.7.  |
| <b>Applications</b>     | SDS-PAGE; WB; ELISA; IP  |
| <b>Stability</b>        | The thermal stability is described by the loss rate. The loss rate was determined by                                       |

 Tel: 1-631-559-9269    1-516-512-3133

 Email: [info@creative-biomart.com](mailto:info@creative-biomart.com)     Fax: 1-631-938-8127

 45-1 Ramsey Road, Shirley, NY 11967, USA

accelerated thermal degradation test, that is, incubate the protein at 37°C for 48h, and no obvious degradation and precipitation were observed. The loss rate is less than 5% within the expiration date under appropriate storage condition.

**Storage**

Avoid repeated freeze/thaw cycles. Store at 2-8°C for one month. Aliquot and store at -80°C for 12 months.

**Storage buffer**

Supplied as lyophilized form in PBS, pH 7.4, containing 5% sucrose.

**Reconstitution**

Reconstitute in sterile PBS, pH7.2-pH7.4.

## GENE INFORMATION

**Gene Name**

[Cdh2 cadherin 2 \[ Rattus norvegicus \(Norway rat\) \]](#)

**Official Symbol**

[Cdh2](#)

**Synonyms**

Cdh2; cadherin 2; N-cadherin; cadherin-2; cadherin 2, type 1, N-cadherin (neuronal); neural cadherin

**Gene ID**

[83501](#)

**mRNA Refseq**

[NM\\_031333.1](#)

**Protein Refseq**

[NP\\_112623.1](#)

**UniProt ID**

[Q9Z1Y3](#)

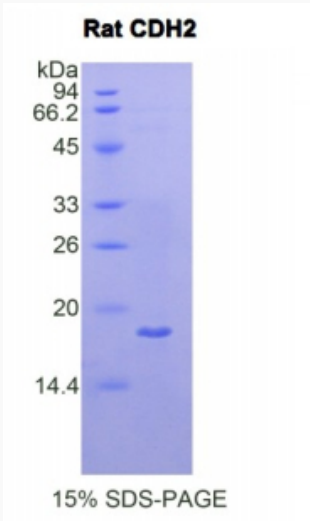
 Tel: 1-631-559-9269 1-516-512-3133

 Email: [info@creative-biomart.com](mailto:info@creative-biomart.com)  Fax: 1-631-938-8127

 45-1 Ramsey Road, Shirley, NY 11967, USA



SDS-PAGE



Tel: 1-631-559-9269 1-516-512-3133

Email: [info@creative-biomart.com](mailto:info@creative-biomart.com) Fax: 1-631-938-8127

45-1 Ramsey Road, Shirley, NY 11967, USA