

Recombinant Rat Cdh2 protein, His-tagged

Cat. No. Cdh2-7026R **Lot. No.** (See product label)

SPECIFICATION

Product Overview	Recombinant Rat Cdh2 aa. (Pro144~Asn273 (Accession # Q9Z1Y3)) fused with N-terminal His tag was produced in E. coli cells.
Species	Rat
Source	E.coli
ProteinLength	Pro144~Asn273
Description	Cell-cell adhesion molecule; may play a role in smooth muscle cell migration and adhesion in response to injury.
Form	Freeze-dried powder
Molecular Mass	17kDa as determined by SDS-PAGE reducing conditions.
Endotoxin	<1.0EU per 1g (determined by the LAL method)
Purity	>95%
Characteristic	The isoelectric point is 4.7.
Applications	SDS-PAGE; WB; ELISA; IP
Stability	The thermal stability is described by the loss rate. The loss rate was determined by

 Tel: 1-631-559-9269 1-516-512-3133

 Email: info@creative-biomart.com  Fax: 1-631-938-8127

 45-1 Ramsey Road, Shirley, NY 11967, USA

accelerated thermal degradation test, that is, incubate the protein at 37°C for 48h, and no obvious degradation and precipitation were observed. The loss rate is less than 5% within the expiration date under appropriate storage condition.

Storage

Avoid repeated freeze/thaw cycles. Store at 2-8°C for one month. Aliquot and store at -80°C for 12 months.

Storage buffer

Supplied as lyophilized form in PBS, pH 7.4, containing 5% sucrose.

Reconstitution

Reconstitute in sterile PBS, pH7.2-pH7.4.

GENE INFORMATION

Gene Name

[Cdh2 cadherin 2 \[Rattus norvegicus \(Norway rat\) \]](#)

Official Symbol

[Cdh2](#)

Synonyms

Cdh2; cadherin 2; N-cadherin; cadherin-2; cadherin 2, type 1, N-cadherin (neuronal); neural cadherin

Gene ID

[83501](#)

mRNA Refseq

[NM_031333.1](#)

Protein Refseq

[NP_112623.1](#)

UniProt ID

[Q9Z1Y3](#)

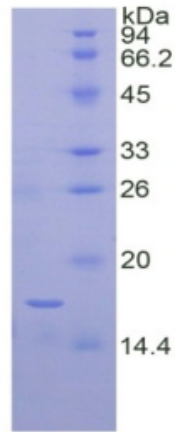
 Tel: 1-631-559-9269 1-516-512-3133

 Email: info@creative-biomart.com  Fax: 1-631-938-8127

 45-1 Ramsey Road, Shirley, NY 11967, USA

SDS-PAGE

Rat CDH2



15% SDS-PAGE

 Tel: 1-631-559-9269 1-516-512-3133

 Email: info@creative-biomart.com  Fax: 1-631-938-8127

 45-1 Ramsey Road, Shirley, NY 11967, USA