

GMP Recombinant Mouse Cdnf Protein, His-Tagged

Cat. No. Cdnf-01M **Lot. No.** (See product label)

SPECIFICATION

Product Overview	GMP Recombinant Mouse Cdnf Protein, His-Tagged was expressed in Escherichia coli cell-derived in an animal component free process under cGMP guidelines.
Species	Mouse
Source	E.coli
Description	Predicted to enable growth factor activity. Predicted to be involved in dopaminergic neuron differentiation and neuron projection development. Predicted to be located in extracellular region. Predicted to be active in endoplasmic reticulum and extracellular space. Is expressed in several structures, including brain; genitourinary system; hemolymphoid system gland; salivary gland; and skeletal muscle tissue. Orthologous to human CDNF (cerebral dopamine neurotrophic factor).
Form	Lyophilized
AA Sequence	MQGLEAGVGPRADCEVCKEFLDRFYNSLLSRGIDFSADTIEKELLNFCSDAKGKENR LCYYLGATTTDAATKILGEVTRPMSVHIPAVKICEKLLKMDSQICELKYGKKLDLASVDL WKMRVAELKQILQRWGEECRACAEEKSDYVNLIRELAPKYVEIYPQTEL with polyhistidine tag at the C-terminus
Endotoxin	<0.1 EU per 1 µg of the protein by the LAL method.
Purity	>98% as determined by SDS-PAGE. Ni-NTA chromatography

 Tel: 1-631-559-9269 1-516-512-3133

 Email: info@creative-biomart.com  Fax: 1-631-938-8127

 45-1 Ramsey Road, Shirley, NY 11967, USA

Notes	Please use within one month after protein reconstitution.
Storage	Lyophilized protein should be stored at -20°C. Upon reconstitution, protein aliquots should be stored at -20°C or -80°C.
Storage Buffer	The protein was lyophilized from a solution containing 1X PBS, pH 7.4.
Reconstitution	It is recommended to reconstitute the lyophilized protein in sterile H ₂ O to a concentration not less than 100 µg/mL and incubate the stock solution for at least 20 min to ensure sufficient re-dissolved.

GENE INFORMATION

Gene Name	Cdnf cerebral dopamine neurotrophic factor [Mus musculus (house mouse)]
Official Symbol	Cdnf
Synonyms	Armet1; 9330140G23
Gene ID	227526
mRNA Refseq	NM_177647.4
Protein Refseq	NP_808315.1
UniProt ID	Q8CC36

 Tel: 1-631-559-9269 1-516-512-3133

 Email: info@creative-biomart.com  Fax: 1-631-938-8127

 45-1 Ramsey Road, Shirley, NY 11967, USA



kDa

75-

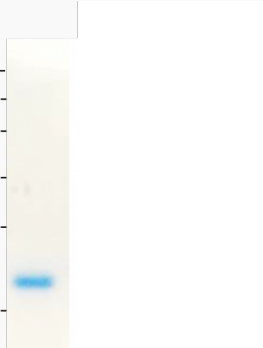
63-

48-

35-

25-

17-



Tel: 1-631-559-9269 1-516-512-3133

Email: info@creative-biomart.com Fax: 1-631-938-8127

45-1 Ramsey Road, Shirley, NY 11967, USA