

## Recombinant Mouse Cdnf Protein (Gln25-Leu187), C-His tagged, Animal-free, Carrier-free

**Cat. No.** Cdnf-108M    **Lot. No.** (See product label)

### SPECIFICATION

<b>Product Overview</b>	Recombinant Mouse Cdnf Protein (Gln25-Leu187) with C-His tag was expressed in E. coli and Animal-free as well as Carrier-free.
<b>Species</b>	Mouse
<b>Source</b>	E.coli
<b>ProteinLength</b>	Gln25-Leu187
<b>Description</b>	Cerebral Dopamine Neurotrophic Factor (CDNF) also known as ARMETL1, which is a member of ARMET family. Mouse CDNF shares 80% sequence identity with human CDNF. CDNF is a 20.9 kDa neurotrophic factor containing 187 residues that widely expressed in various tissues, including embryonic and postnatal brain. Besides, CDNF shows the ability to protect the degeneration of dopaminergic neurons in Parkinson's disease, induced by 6-hydroxydopamine (6-OHDA). Moreover, as a neurotrophic factor, CDNF also can repair the dopaminergic function of dopaminergic neurons.
<b>Form</b>	Lyophilized
<b>Molecular Mass</b>	The protein has a calculated MW of 19.47 kDa. The protein migrates as 17-25 kDa under reducing condition (SDS-PAGE analysis).
<b>Endotoxin</b>	< 0.1 EU/μg of the protein by the LAL method.

 Tel: 1-631-559-9269    1-516-512-3133

 Email: [info@creative-biomart.com](mailto:info@creative-biomart.com)     Fax: 1-631-938-8127

 45-1 Ramsey Road, Shirley, NY 11967, USA

<b>Purity</b>	>98% as determined by SDS-PAGE analysis.
<b>Storage</b>	This product is stable after storage at: -20 centigrade for 12 months in lyophilized state from date of receipt. -20 or -80 centigrade for 1 month under sterile conditions after reconstitution. Avoid repeated freeze/thaw cycles.
<b>Storage Buffer</b>	Lyophilized from a 0.2 µm filtered solution of PBS, pH 7.4.
<b>Reconstitution</b>	It is recommended to reconstitute the lyophilized protein in sterile H <sub>2</sub> O to a concentration not less than 200 µg/mL and incubate the stock solution for at least 20 min to ensure sufficient re-dissolved.
<b>Shipping</b>	The product is shipped with polar packs. Upon receipt, store it immediately at -20 centigrade or lower for long term storage.

## GENE INFORMATION

<b>Gene Name</b>	<a href="#">Cdnf cerebral dopamine neurotrophic factor [ Mus musculus (house mouse) ]</a>
<b>Official Symbol</b>	<a href="#">Cdnf</a>
<b>Synonyms</b>	CDNF; cerebral dopamine neurotrophic factor; ARMET-like protein 1; conserved dopamine neurotrophic factor; arginine-rich, mutated in early stage tumors-like 1; Armet1; 9330140G23; MGC129430;
<b>Gene ID</b>	<a href="#">227526</a>
<b>mRNA Refseq</b>	<a href="#">NM_177647</a>
<b>Protein Refseq</b>	<a href="#">NP_808315</a>

 Tel: 1-631-559-9269 1-516-512-3133

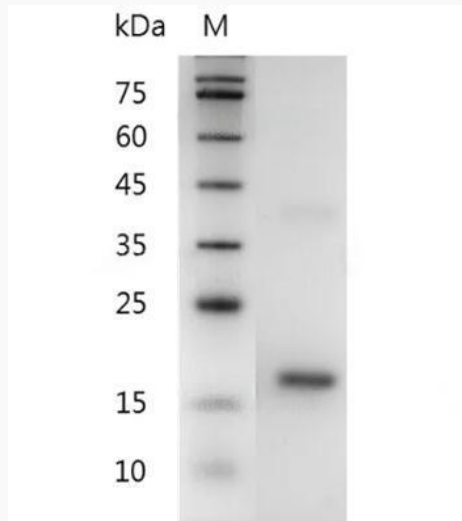
 Email: [info@creative-biomart.com](mailto:info@creative-biomart.com)  Fax: 1-631-938-8127

 45-1 Ramsey Road, Shirley, NY 11967, USA

UniProt ID

Q8CC36

**SDS-PAGE analysis  
of recombinant  
mouse CDNF.**



 Tel: 1-631-559-9269 1-516-512-3133

 Email: [info@creative-biomart.com](mailto:info@creative-biomart.com)  Fax: 1-631-938-8127

 45-1 Ramsey Road, Shirley, NY 11967, USA