

Active Recombinant Rat Cdnf protein

Cat. No. Cdnf-231R **Lot. No.** (See product label)

SPECIFICATION

Product Overview	Active Recombinant Rat Cdnf protein(P0C510)(25-187 aa) was expressed in E.coli.
Species	Rat
Source	E.coli
ProteinLength	25-187 aa
Form	Lyophilized from a 0.2 µ filtered concentrated solution in PBS, pH 7.4.
Bio-activity	Fully biologically active when compared to standard. It is able to enhance neurite outgrowth of E16-E18 rat embryonic cortical neurons when immobilized at 5 - 25 µg/mL on a nitrocellulose-coated microplate.
Molecular Mass	Approximately 18.8 kDa, a single non-glycosylated polypeptide chain containing 163 amino acids.
AASequence	QGLEAGVRSR ADCEVCKEFL NRFYNLLTR GIDFSVDTIE EELISFCADT KGKENRLCYY LGATKDSATK ILGEVTRPMS VHMPTVKICE KLKKMDSQIC ELKYEKLDL ESVDLWKMRV AELKQILHSW GEECRACA EK HDYVNLIKEL APKYVETRPQ TEL
Endotoxin	Less than 0.1 EU/g of rRtCDNF as determined by LAL method.
Purity	>97% by SDS-PAGE and HPLC analyses.

 Tel: 1-631-559-9269 1-516-512-3133

 Email: info@creative-biomart.com  Fax: 1-631-938-8127

 45-1 Ramsey Road, Shirley, NY 11967, USA

Storage Use a manual defrost freezer and avoid repeated freeze-thaw cycles. - 12 months from date of receipt, -20 to -70 °C as supplied. - 1 month, 2 to 8 °C under sterile conditions after reconstitution. - 3 months, -20 to -70 °C under sterile conditions after reconstitution.

Reconstitution We recommend that this vial be briefly centrifuged prior to opening to bring the contents to the bottom. Reconstitute in sterile distilled water or aqueous buffer containing 0.1 % BSA to a concentration of 0.1-1.0 mg/mL. Stock solutions should be apportioned into working aliquots and stored at ≤ -20 °C. Further dilutions should be made in appropriate buffered solutions.

GENE INFORMATION

Gene Name [Cdnf cerebral dopamine neurotrophic factor \[Rattus norvegicus \]](#)

Official Symbol [Cdnf](#)

Synonyms CDNF; cerebral dopamine neurotrophic factor; ARMET-like protein 1; conserved dopamine neurotrophic factor; arginine-rich, mutated in early stage tumors-like 1; arginine-rich protein mutated in early stage tumors-like 1; Armetl1;

Gene ID [361276](#)

mRNA Refseq [NM_001037543](#)

Protein Refseq [NP_001032632](#)

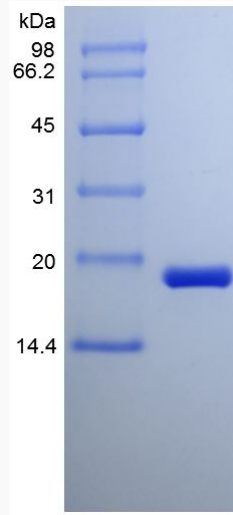
 Tel: 1-631-559-9269 1-516-512-3133

 Email: info@creative-biomart.com  Fax: 1-631-938-8127

 45-1 Ramsey Road, Shirley, NY 11967, USA



SDS-PAGE



Tel: 1-631-559-9269 1-516-512-3133

Email: info@creative-biomart.com Fax: 1-631-938-8127

45-1 Ramsey Road, Shirley, NY 11967, USA