

Recombinant Mouse Cebpb Protein, His-tagged

Cat. No. Cebpb-736M **Lot. No.** (See product label)

SPECIFICATION

Product Overview	Recombinant Mouse Cebpb Protein (Glu224-Leu285) with His tag was expressed in E. coli.
Species	Mouse
Source	E.coli
ProteinLength	Glu224-Leu285
Description	<p>Enables several functions, including DNA-binding transcription activator activity, RNA polymerase II-specific; RNA polymerase II core promoter sequence-specific DNA binding activity; and enzyme binding activity. Contributes to RNA polymerase II cis-regulatory region sequence-specific DNA binding activity. Involved in several processes, including liver development; regulation of leukocyte differentiation; and response to bacterium. Acts upstream of or within several processes, including mammary gland epithelium development; positive regulation of osteoblast differentiation; and regulation of gene expression. Located in chromosome; cytoplasm; and nuclear matrix. Part of RNA polymerase II transcription regulator complex. Is expressed in several structures, including adrenal gland; alimentary system; extraembryonic component; genitourinary system; and integumental system. Used to study cleidocranial dysplasia and viral infectious disease. Orthologous to human CEBPB (CCAAT enhancer binding protein beta).</p>
Form	Freeze-dried powder

 Tel: 1-631-559-9269 1-516-512-3133

 Email: info@creative-biomart.com  Fax: 1-631-938-8127

 45-1 Ramsey Road, Shirley, NY 11967, USA

Molecular Mass	Predicted Molecular Mass: 11.3 kDa; Accurate Molecular Mass: 14 kDa
Purity	> 90%
Applications	Positive Control; Immunogen; SDS-PAGE; WB.
Stability	The thermal stability is described by the loss rate. The loss rate was determined by accelerated thermal degradation test, that is, incubate the protein at 37 centigrade for 48h, and no obvious degradation and precipitation were observed. The loss rate is less than 5% within the expiration date under appropriate storage condition.
Storage	Avoid repeated freeze/thaw cycles. Store at 2-8 centigrade for one month. Aliquot and store at -80 centigrade for 12 months.
Storage Buffer	20mM Tris, 150mM NaCl, pH8.0, containing 1mM EDTA, 1mM DTT, 0.01% SKL, 5% Trehalose and Proclin300.
Reconstitution	Reconstitute in 20mM Tris, 150mM NaCl (pH8.0) to a concentration of 0.1-1.0 mg/mL. Do not vortex.

GENE INFORMATION

Gene Name	Cebpb CCAAT/enhancer binding protein (C/EBP), beta [Mus musculus (house mouse)]
Official Symbol	Cebpb
Synonyms	CEBPB; CCAAT/enhancer binding protein (C/EBP), beta; CCAAT/enhancer-binding protein beta; AGP/EBP; C/EBP BETA; nuclear protein Il6; interleukin-6-dependent-binding protein; liver-enriched transcriptional activator; LAP; LIP; CRP2; NF-M; Nfil6; NF-IL6; IL-6DBP; C/EBPbeta;

 Tel: 1-631-559-9269 1-516-512-3133

 Email: info@creative-biomart.com  Fax: 1-631-938-8127

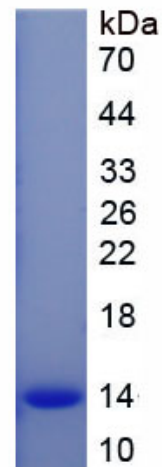
 45-1 Ramsey Road, Shirley, NY 11967, USA

Gene ID 12608

mRNA Refseq NM_009883

Protein Refseq NP_034013

UniProt ID P28033



Tel: 1-631-559-9269 1-516-512-3133

Email: info@creative-biomart.com Fax: 1-631-938-8127

45-1 Ramsey Road, Shirley, NY 11967, USA