

Recombinant Mouse Cenpi Protein, His/GST-tagged

Cat. No. Cenpi-277M Lot. No. (See product label)

SPECIFICATION

Product Overview	Recombinant Mouse Cenpi(Thr321~Pro579) fused with His/GST tag at N-terminal was expressed in E. coli.
Species	Mouse
Source	E.coli
ProteinLength	Thr321~Pro579
Description	This gene encodes a protein that may be constitutively associated with centromeres and might be involved in recruiting centromere protein A to the centromere for kinetochore assembly. A similar gene in human is involved in the response of gonadal tissues to follicle-stimulating hormone. Alternatively spliced transcript variants have been identified.
Form	PBS, pH7.4, containing 0.01% SKL, 1mM DTT, 5% Trehalose and Proclin300.
Molecular Mass	62.4kDa
Identity	Reconstitute in PBS or others
Endotoxin	<1.0EU per 1g (determined by the LAL method)
Purity	> 95%

 Tel: 1-631-559-9269 1-516-512-3133

 Email: info@creative-biomart.com  Fax: 1-631-938-8127

 45-1 Ramsey Road, Shirley, NY 11967, USA

Applications	Positive Control; Immunogen; SDS-PAGE; WB. If bio-activity of the protein is needed, please check active protein
Stability	The thermal stability is described by the loss rate. The loss rate was determined by accelerated thermal degradation test, that is, incubate the protein at 37 centigrade for 48h, and no obvious degradation and precipitation were observed. The loss rate is less than 5% within the expiration date under appropriate storage condition.
Storage	Avoid repeated freeze/thaw cycles. Store at 2-8 centigrade for one month. Aliquot and store at -80 centigrade for 12 months.
Reconstitution	Reconstitute in PBS or others

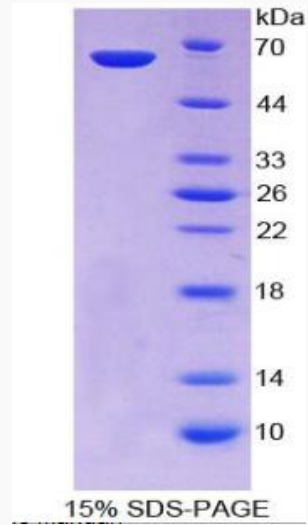
GENE INFORMATION

Gene Name	Cenpi centromere protein I [Mus musculus]
Official Symbol	Cenpi
Synonyms	CENPI; centromere protein I; CENP-I; FSH primary response 1; FSH primary response protein 1; follicle-stimulating hormone primary response protein; Fshprh1; AI504163; MGC40943;
Gene ID	102920
mRNA Refseq	NM_145924
Protein Refseq	NP_666036
UniProt ID	Q8K1K4

 Tel: 1-631-559-9269 1-516-512-3133

 Email: info@creative-biomart.com  Fax: 1-631-938-8127

 45-1 Ramsey Road, Shirley, NY 11967, USA



Tel: 1-631-559-9269 1-516-512-3133

Email: info@creative-biomart.com Fax: 1-631-938-8127

45-1 Ramsey Road, Shirley, NY 11967, USA