

## Recombinant Mouse Ces1 protein, His&Myc-tagged

Cat. No. Ces1-5787M Lot. No. (See product label)

### SPECIFICATION

|                         |  |
|-------------------------|--|
| <b>Product Overview</b> | Recombinant Mouse Ces1 protein(Q8VCC2)(19-565aa), fused with N-terminal His tag and C-terminal Myc tag, was expressed in E.coli.   |
| <b>Species</b>          | Mouse  |
| <b>Source</b>           | E.coli   |
| <b>ProteinLength</b>    | 19-565aa   |
| <b>Form</b>             | If the delivery form is liquid, the default storage buffer is Tris/PBS-based buffer, 5%-50% glycerol. If the delivery form is lyophilized powder, the buffer before lyophilization is Tris/PBS-based buffer, 6% Trehalose, pH 8.0.   |
| <b>Molecular Mass</b>   | 68.2 kDa   |
| <b>Purity</b>           | Greater than 85% as determined by SDS-PAGE.  |
| <b>Storage</b>          | Store at -20°C/-80°C upon receipt, aliquoting is necessary for mutiple use. Avoid repeated freeze-thaw cycles.   |
| <b>Reconstitution</b>   | We recommend that this vial be briefly centrifuged prior to opening to bring the contents to the bottom. Please reconstitute protein in deionized sterile water to a concentration of 0.1-1.0 mg/mL. We recommend to add 5-50% of glycerol (final concentration) and aliquot for long-term storage at -20°C/-80°C. |

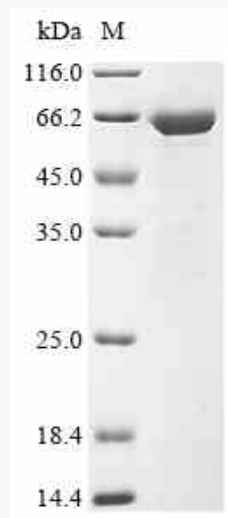
 Tel: 1-631-559-9269 1-516-512-3133

 Email: [info@creative-biomart.com](mailto:info@creative-biomart.com)  Fax: 1-631-938-8127

 45-1 Ramsey Road, Shirley, NY 11967, USA

**AA Sequence**

HPSLPPVVHTVHGKVLGKYVTLEGFSQPVAVFLGVPFAPPLGSLRFAPPEPAEPW  
SFVKHTTSYPPLCYQNPEAALRLAELFTNQRKIIPHKFSEDCLYLNIYTPADLTQNSRL  
PVMVWIHGGGLVIDGASTYDGVPLAVHENVVVVVIQYRLGIWGGFFSTEDEHSRGNW  
GHLDQVAALHWWQDNIANFGGNPGSVTIFGESAGGESVSVLVLSPLAKNLFHRAIAQ  
SSVIFNPCLFGRAARPLAKKIAALAGCKTTTSAAMVHCLRQKTEDELLEVSLKMKFGT  
VDFLGDPPRESYPFLPTVIDGVLLPKAPEEILAEKSFNTVPYMGINKHEFGWIIPMFLD  
FPLSERKLDQKTAASILWQAYPILNISEKLIPAAIEKYLGGTEDPATMTDLFLDLIGDIM  
FGVPSVIVSRSHRDAGAPTYMYEYQYRPSFVSDDRPQELLGDHADELFSVWGAPFL  
KEGASEEEINLSKMVMKFWANFARNGNPNGEGLPHWPEYDQKEGYLQIGVPAQAA  
HRLKDKEVDFWTELRAKETAERSSHREHVEL

**SDS-PAGE**

 Tel: 1-631-559-9269 1-516-512-3133

 Email: [info@creative-biomart.com](mailto:info@creative-biomart.com)  Fax: 1-631-938-8127

 45-1 Ramsey Road, Shirley, NY 11967, USA