

Recombinant Rat Cfb protein, His-tagged

Cat. No. Cfb-2108R Lot. No. (See product label)

SPECIFICATION

Product Overview	Recombinant Rat Cfb aa. (Asn269~Val382 (Accession # G3V615)) fused with N-terminal His tag was produced in E. coli cells.
Species	Rat
Source	E.coli
ProteinLength	Asn269~Val382
Form	Freeze-dried powder
Molecular Mass	Predicted Molecular Mass: 14.2kDa
Endotoxin	<1.0EU per 1ug (determined by the LAL method)
Purity	>95%
Characteristic	The isoelectric point is 8.7.
Applications	SDS-PAGE; WB; ELISA; IP.
Stability	The thermal stability is described by the loss rate of the target protein. The loss rate was determined by accelerated thermal degradation test, that is, incubate the protein at 37°C for 48h, and no obvious degradation and precipitation were observed. (Referring from China Biological Products Standard, which was calculated by the

 Tel: 1-631-559-9269 1-516-512-3133

 Email: info@creative-biomart.com  Fax: 1-631-938-8127

 45-1 Ramsey Road, Shirley, NY 11967, USA

Arrhenius equation.) The loss of this protein is less than 5% within the expiration date under appropriate storage condition.

Storage

Avoid repeated freeze/thaw cycles. Store at 2-8°C for one month. Aliquot and store at -80°C for 12 months.

Storage Buffer

Supplied as lyophilized form in PBS, pH7.4, containing 5% trehalose, 0.01% sarcosyl.

Reconstitution

Reconstitute in sterile PBS, pH7.2-pH7.4.

GENE INFORMATION

Gene Name

[Cfb complement factor B \[Rattus norvegicus \(Norway rat\) \]](#)

Official Symbol

[Cfb](#)

Synonyms

Runx3; runt related transcription factor 3; AML2; Cbfa3; Pebp2a3; runt-related transcription factor 3; CBF-alpha-3; PEA2-alpha C; PEBP2-alpha C; SL3-3 enhancer factor 1 alpha C subunit; SL3/AKV core-binding factor alpha C subunit; acute myeloid leukemia 2 protein; core binding factor alpha 3; core-binding factor subunit alpha-3; oncogene AML-2; polyomavirus enhancer-binding protein 2 alpha C subunit; runt domain, alpha subunit 3; transcription factor AML2/CBFA3

Gene ID

[294257](#)

mRNA Refseq

[NM_212466.3](#)

Protein Refseq

[NP_997631.2](#)

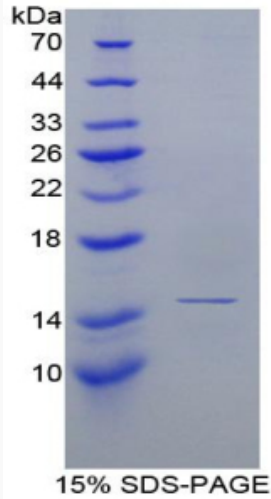
UniProt ID

[G3V615](#)

 Tel: 1-631-559-9269 1-516-512-3133

 Email: info@creative-biomart.com  Fax: 1-631-938-8127

 45-1 Ramsey Road, Shirley, NY 11967, USA



SDS-PAGE

Tel: 1-631-559-9269 1-516-512-3133

Email: info@creative-biomart.com Fax: 1-631-938-8127

45-1 Ramsey Road, Shirley, NY 11967, USA