

Recombinant Rat Cfh protein, His-tagged

Cat. No. Cfh-643R **Lot. No.** (See product label)

SPECIFICATION

Product Overview	Recombinant Rat Cfh aa. (Ala975~Ser1217 (Accession # G3V9R2)) fused with N-terminal His tag was produced in E. coli cells.
Species	Rat
Source	E.coli
ProteinLength	Ala975~Ser1217
Description	Regulator of complement cascade activation.
Form	Freeze-dried powder
Molecular Mass	Predicted Molecular Mass: 28.7kDa
Endotoxin	<1.0EU per 1g (determined by the LAL method)
Purity	>95%
Characteristic	The isoelectric point is 8.8.
Applications	SDS-PAGE; WB; ELISA; IP
Stability	The thermal stability is described by the loss rate. The loss rate was determined by accelerated thermal degradation test, that is, incubate the protein at 37°C for 48h,

 Tel: 1-631-559-9269 1-516-512-3133

 Email: info@creative-biomart.com  Fax: 1-631-938-8127

 45-1 Ramsey Road, Shirley, NY 11967, USA

and no obvious degradation and precipitation were observed. The loss rate is less than 5% within the expiration date under appropriate storage condition.

Storage

Avoid repeated freeze/thaw cycles. Store at 2-8°C for one month. Aliquot and store at -80°C for 12 months.

Storage buffer

Supplied as lyophilized form in PBS, pH7.4, containing 5% sucrose, 0.01% sarcosyl.

Reconstitution

Reconstitute in sterile PBS, pH7.2-pH7.4.

GENE INFORMATION

Gene Name

Cfh complement factor H [*Rattus norvegicus* (Norway rat)]

Official Symbol

Cfh

Synonyms

Cfh; complement factor H; Fh; AMBP1; AMBP-1; complement factor H; adrenomedullin binding protein-1; complement component factor H; complement inhibitory factor H; platelet complement factor H

Gene ID

155012

mRNA Refseq

NM_130409.2

Protein Refseq

NP_569093.2

UniProt ID

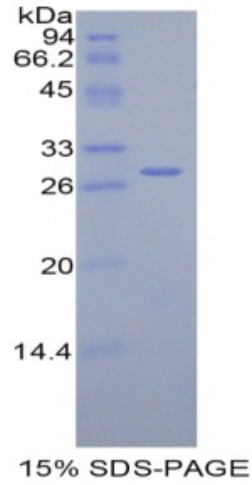
G3V9R2

 Tel: 1-631-559-9269 1-516-512-3133

 Email: info@creative-biomart.com  Fax: 1-631-938-8127

 45-1 Ramsey Road, Shirley, NY 11967, USA

SDS-PAGE



 Tel: 1-631-559-9269 1-516-512-3133

 Email: info@creative-biomart.com  Fax: 1-631-938-8127

 45-1 Ramsey Road, Shirley, NY 11967, USA