

## Recombinant Mouse Cfh protein, His-GST-tagged

Cat. No. Cfh-761M Lot. No. (See product label)

### SPECIFICATION

<b>Product Overview</b>	Recombinant Mouse Cfh protein(Ser877~Val1234), fused with N-terminal GST tag and His tag, was expressed in E.coli.
<b>Species</b>	Mouse
<b>Source</b>	E.coli
<b>ProteinLength</b>	877-1234 aa
<b>Form</b>	Lyophilized from 20mM Tris, 150mM NaCl, pH8.0, containing 1mM EDTA, 1mM DTT, 0.01% SKL, 5% Trehalose and Proclin300.
<b>Molecular Mass</b>	70.2kDa
<b>Endotoxin</b>	<1.0EU per 1g (determined by the LAL method)
<b>Purity</b>	> 95%
<b>Storage</b>	Avoid repeated freeze/thaw cycles. Store at 2-8°C for one month, -20°C for 12 months. Aliquot and store at -80°C for 12 months.
<b>Reconstitution</b>	Reconstitute in 20mM Tris, 150mM NaCl (pH8.0) to a concentration of 0.1-1.0 mg/mL. Do not vortex.

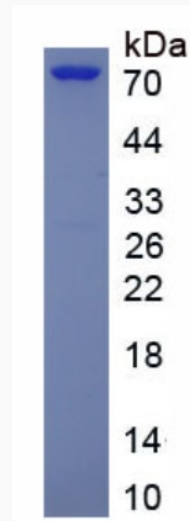
### GENE INFORMATION

 Tel: 1-631-559-9269 1-516-512-3133

 Email: [info@creative-biomart.com](mailto:info@creative-biomart.com)  Fax: 1-631-938-8127

 45-1 Ramsey Road, Shirley, NY 11967, USA

<b>Gene Name</b>	Cfh complement component factor h [ <i>Mus musculus</i> ]
<b>Official Symbol</b>	Cfh
<b>Synonyms</b>	CFH; complement component factor h; complement factor H; protein beta-1-H; complement factor H related protein 3A4/5G4; NOM; Sas1; Mud-1; Sas-1;
<b>mRNA Refseq</b>	NM_009888
<b>Protein Refseq</b>	NP_034018
<b>Gene ID</b>	12628

**SDS-PAGE**


 Tel: 1-631-559-9269 1-516-512-3133

 Email: [info@creative-biomart.com](mailto:info@creative-biomart.com)  Fax: 1-631-938-8127

 45-1 Ramsey Road, Shirley, NY 11967, USA