

Recombinant Mouse Cfi protein, His-tagged

Cat. No. Cfi-1408M Lot. No. (See product label)

SPECIFICATION

Product Overview	Recombinant Mouse Cfi protein(Q61129)(Arg19-Val603), fused with C-terminal His tag, was expressed in HEK293.
Species	Mouse
Source	C-His
ProteinLength	Arg19-Val603
Tag	C-His
Form	Supplied as 0.22µm filtered solution in 50mM Tris, 150mM NaCl (pH 8.0).
Bio-activity	
Molecular Mass	The protein has a predicted MW of 66.39 kDa. Due to autocatalytic cleavage and glycosylation, the protein migrates to 80-100 kDa on Tris-Bis PAGE result.
Endotoxin	Less than 1EU per µg by the LAL method.
Purity	> 95% as determined by Tris-Bis PAGE; > 95% as determined by HPLC.
Storage	Valid for 12 months from date of receipt when stored at -80°C.;Recommend to aliquot the protein into smaller quantities for optimal storage. Please do not repeated freeze-thaw cycles.

 Tel: 1-631-559-9269 1-516-512-3133

 Email: info@creative-biomart.com  Fax: 1-631-938-8127

 45-1 Ramsey Road, Shirley, NY 11967, USA

Reconstitution It is recommended that sterile water be added to the vial to prepare a stock solution of 0.2 ug/ul. Centrifuge the vial at 4°C before opening to recover the entire contents.

GENE INFORMATION

Gene Name [Cfi complement component factor i \[Mus musculus \]](#)

Official Symbol [Cfi](#)

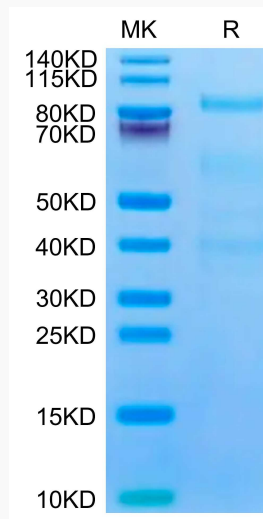
Synonyms CFI; complement component factor i; complement factor I; C3B/C4B inactivator;

Gene ID [12630](#)

mRNA Refseq [NM_007686](#)

Protein Refseq [NP_031712](#)

Tris-Bis PAGE



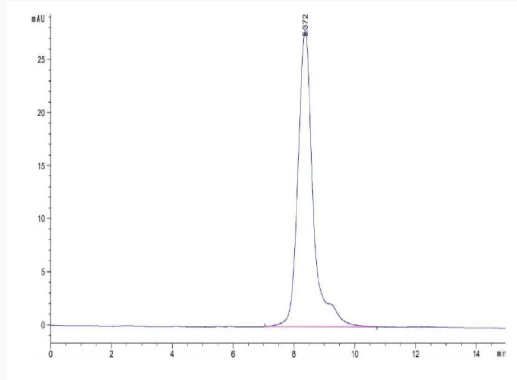
Tel: 1-631-559-9269 1-516-512-3133

Email: info@creative-biomart.com Fax: 1-631-938-8127

45-1 Ramsey Road, Shirley, NY 11967, USA



SEC-HPLC



Tel: 1-631-559-9269 1-516-512-3133

Email: info@creative-biomart.com Fax: 1-631-938-8127

45-1 Ramsey Road, Shirley, NY 11967, USA