

Recombinant Rat Chek1 protein, His&Myc-tagged

Cat. No. Chek1-673R Lot. No. (See product label)

SPECIFICATION

Product Overview	Recombinant Rat Chek1 protein(Q91ZN7)(1-476aa), fused with N-terminal His tag and C-terminal Myc tag, was expressed in E.coli.
Species	Rat
Source	E.coli
ProteinLength	1-476a.a.
Tag	His&Myc
Form	If the delivery form is liquid, the default storage buffer is Tris/PBS-based buffer, 5%-50% glycerol. If the delivery form is lyophilized powder, the buffer before lyophilization is Tris/PBS-based buffer, 6% Trehalose, pH 8.0.
Molecular Mass	61.9 kDa
Purity	Greater than 85% as determined by SDS-PAGE.
Storage	Store at -20°C/-80°C upon receipt, aliquoting is necessary for mutiple use. Avoid repeated freeze-thaw cycles.
Reconstitution	We recommend that this vial be briefly centrifuged prior to opening to bring the contents to the bottom. Please reconstitute protein in deionized sterile water to a concentration of 0.1-1.0 mg/mL.We recommend to add 5-50% of glycerol (final

 Tel: 1-631-559-9269 1-516-512-3133

 Email: info@creative-biomart.com  Fax: 1-631-938-8127

 45-1 Ramsey Road, Shirley, NY 11967, USA

concentration) and aliquot for long-term storage at -20°C/-80°C.

AA Sequence

MAVPFVEDWDLVQTLGEGAYGEVQLAVNRITEEAVAVKIVDMKRAIDCPENIKKEICI
 NKMLNHENVVKFYGHRREGNIQYLFLEYCSGGELFDRIEPDIGMPEQDAQRFFHQL
 MAGVVYLHGIGITHRDIKPENLLLLDERDNLKISDFGLATVFRHNNRERLLNKMCGTLP
 YVAPPELLKRKEFHAEPVDVWSCGIVLTAMLAGELPWDQPSDSCQEYSDWKEKKTYL
 NPWKKIDSAPLALLHKILVENPSARITIPDIKKDRWYNKPLNRGAKRPRATSSGGMSES
 SSGFSKHIHSNLDSPINSGSSEENVKFSSSQPEPRTGLSLWDTGPSNVDKLVQGIS
 FSQPTCPDHMLVNSQLLGTGSSQNPWQRLVKRMTRFFTKLDADKSYQCLKETFE
 KLG YQWKKSCMNQVTVSTMDDRRNKLIFKINLVEMDEKILVDFRLSKG DGLEFKRHF
 LKIKGKLSDIVSSQKVWFPVT

GENE INFORMATION

Gene Name [Chek1 checkpoint kinase 1 \[Rattus norvegicus \]](#)

Official Symbol [Chek1](#)

Synonyms CHEK1; checkpoint kinase 1; serine/threonine-protein kinase Chk1; checkpoint kinase-1; CHK1 checkpoint homolog; checkpoint kinase 1 homolog;

Gene ID [140583](#)

mRNA Refseq [NM_080400](#)

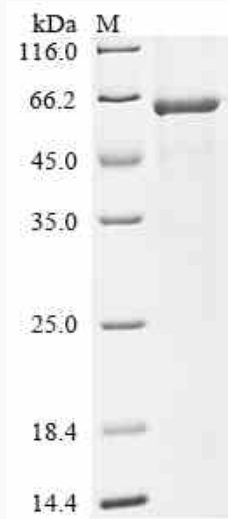
Protein Refseq [NP_536325](#)

 Tel: 1-631-559-9269 1-516-512-3133

 Email: info@creative-biomart.com  Fax: 1-631-938-8127

 45-1 Ramsey Road, Shirley, NY 11967, USA

SDS-PAGE



 Tel: 1-631-559-9269 1-516-512-3133

 Email: info@creative-biomart.com  Fax: 1-631-938-8127

 45-1 Ramsey Road, Shirley, NY 11967, USA