

Recombinant Rat Chi3I1 protein, His&Myc-tagged

Cat. No. Chi3I1-1238R Lot. No. (See product label)

SPECIFICATION

Product Overview	Recombinant Rat Chi3I1 protein(Q9WTV1)(20-381aa), fused to N-terminal His tag and C-terminal Myc tag, was expressed in E. coli.
Species	Rat
Source	E.coli
ProteinLength	20-381aa
Form	If the delivery form is liquid, the default storage buffer is Tris/PBS-based buffer, 5%-50% glycerol. If the delivery form is lyophilized powder, the buffer before lyophilization is Tris/PBS-based buffer, 6% Trehalose, pH 8.0.
Molecular Mass	45.4 kDa
Purity	Greater than 90% as determined by SDS-PAGE.
Storage	Store at -20°C/-80°C upon receipt, aliquoting is necessary for mutiple use. Avoid repeated freeze-thaw cycles.
Reconstitution	It is recommended that sterile water be added to the vial to prepare a stock solution of 0.2 ug/ul. Centrifuge the vial at 4°C before opening to recover the entire contents.

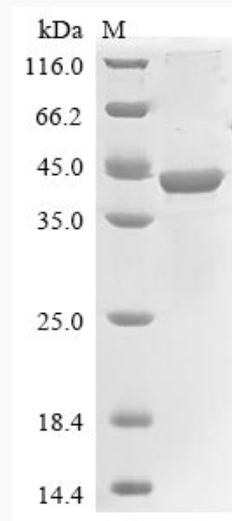
GENE INFORMATION

 Tel: 1-631-559-9269 1-516-512-3133

 Email: info@creative-biomart.com  Fax: 1-631-938-8127

 45-1 Ramsey Road, Shirley, NY 11967, USA

Gene Name	Chi3l1 chitinase 3-like 1 (cartilage glycoprotein-39) [Rattus norvegicus]
Official Symbol	Chi3l1
Synonyms	CHI3L1; chitinase 3-like 1 (cartilage glycoprotein-39); chitinase-3-like protein 1; GP-39; CGP-39; cartilage glycoprotein 39; chitinase 3-like 1 protein; MGC109420;
Gene ID	89824
mRNA Refseq	NM_053560
Protein Refseq	NP_446012

SDS-PAGE


 Tel: 1-631-559-9269 1-516-512-3133

 Email: info@creative-biomart.com  Fax: 1-631-938-8127

 45-1 Ramsey Road, Shirley, NY 11967, USA