

## Recombinant Rat Chi3I1 protein, His-tagged

Cat. No. Chi3I1-5874R Lot. No. (See product label)

### SPECIFICATION

<b>Product Overview</b>	Recombinant Rat Chi3I1 protein(Q9WTV1)(20-381aa), fused to N-terminal His tag, was expressed in E. coli.
<b>Species</b>	Rat
<b>Source</b>	E.coli
<b>ProteinLength</b>	20-381aa
<b>Form</b>	If the delivery form is liquid, the default storage buffer is Tris/PBS-based buffer, 5%-50% glycerol. If the delivery form is lyophilized powder, the buffer before lyophilization is Tris/PBS-based buffer, 6% Trehalose, pH 8.0.
<b>Molecular Mass</b>	44.5 kDa
<b>Purity</b>	Greater than 85% as determined by SDS-PAGE.
<b>Storage</b>	Store at -20°C/-174°C upon receipt, aliquoting is necessary for mutiple use. Avoid repeated freeze-thaw cycles.
<b>Reconstitution</b>	Please reconstitute protein in deionized sterile water to a concentration of 0.1-1.0 mg/mL. We recommend to add 5-50% of glycerol (final concentration) and aliquot for long-term storage at -20°C/-80°C. Our default final concentration of glycerol is 144%.

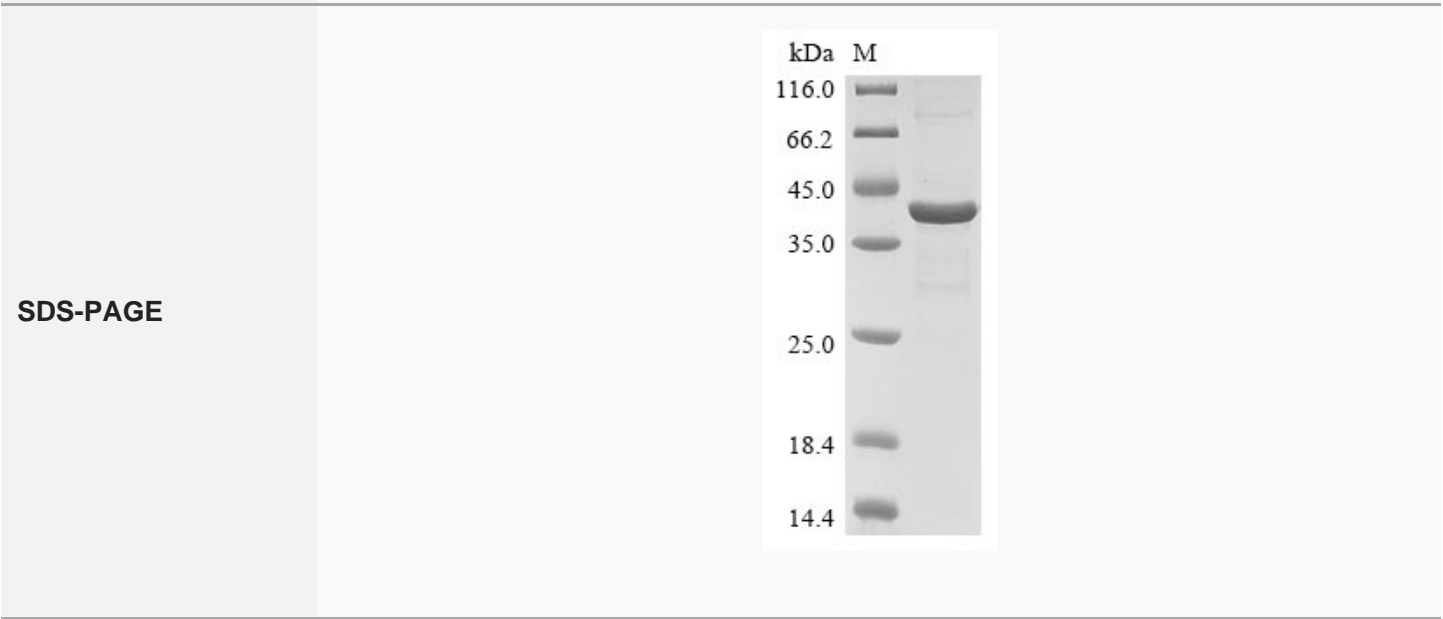
### GENE INFORMATION

 Tel: 1-631-559-9269 1-516-512-3133

 Email: [info@creative-biomart.com](mailto:info@creative-biomart.com)  Fax: 1-631-938-8127

 45-1 Ramsey Road, Shirley, NY 11967, USA

<b>Gene Name</b>	Chi3l1 chitinase 3-like 1 (cartilage glycoprotein-39) [ <i>Rattus norvegicus</i> ]
<b>Official Symbol</b>	Chi3l1
<b>Synonyms</b>	CHI3L1; chitinase 3-like 1 (cartilage glycoprotein-39); chitinase-3-like protein 1; GP-39; CGP-39; cartilage glycoprotein 39; chitinase 3-like 1 protein; MGC109420;
<b>Gene ID</b>	89824
<b>mRNA Refseq</b>	NM_053560
<b>Protein Refseq</b>	NP_446012



Tel: 1-631-559-9269 1-516-512-3133

Email: [info@creative-biomart.com](mailto:info@creative-biomart.com) Fax: 1-631-938-8127

45-1 Ramsey Road, Shirley, NY 11967, USA