

## Recombinant Mouse Chi3l1 protein(Tyr30-Ala389), His-tagged

Cat. No. Chi3l1-61M Lot. No. (See product label)

### SPECIFICATION

<b>Product Overview</b>	Recombinant Mouse Chi3l1 protein(Tyr30-Ala389)(Q61362-1) is expressed from HEK293 with His tag at the C-Terminus.
<b>Species</b>	Mouse
<b>Source</b>	HEK293
<b>ProteinLength</b>	Tyr30-Ala389
<b>Form</b>	Lyophilized from 0.22µm filtered solution in PBS (pH 7.4). Normally 8% trehalose is added as protectant before lyophilization.
<b>Molecular Mass</b>	The protein has a predicted MW of 41.9 kDa. Due to glycosylation, the protein migrates to 42-50 kDa based on Tris-Bis PAGE result.
<b>Endotoxin</b>	Less than 1EU per µg by the LAL method.
<b>Purity</b>	> 95% as determined by Tris-Bis PAGE > 95% as determined by HPLC
<b>Storage</b>	-20 to -80°C for 12 months as supplied from date of receipt. -80°C for 3-6 months after reconstitution. 2-8°C for 2-7 days after reconstitution. Recommend to aliquot the protein into smaller quantities for optimal storage. Please minimize freeze-thaw cycles.

 Tel: 1-631-559-9269 1-516-512-3133

 Email: [info@creative-biomart.com](mailto:info@creative-biomart.com)  Fax: 1-631-938-8127

 45-1 Ramsey Road, Shirley, NY 11967, USA

**Reconstitution** Centrifuge the tube before opening. Reconstituting to a concentration more than 100 µg/ml is recommended. Dissolve the lyophilized protein in distilled water.

## GENE INFORMATION

**Gene Name** Chi3l1 chitinase 3-like 1 [ *Mus musculus* ]

**Official Symbol** Chi3l1

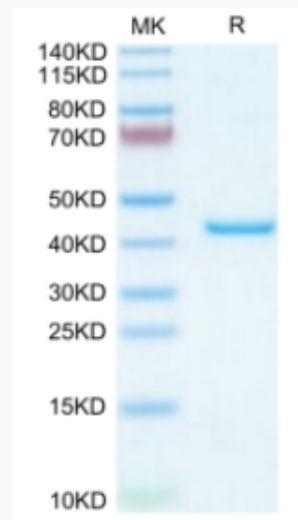
**Synonyms** CHI3L1; chitinase 3-like 1; chitinase-3-like protein 1; GP-39; CGP-39; cartilage glycoprotein 39; Gp39; Brp39; AW208766;

**Gene ID** 12654

**mRNA Refseq** NM\_007695

**Protein Refseq** NP\_031721

### Tris-Bis PAGE



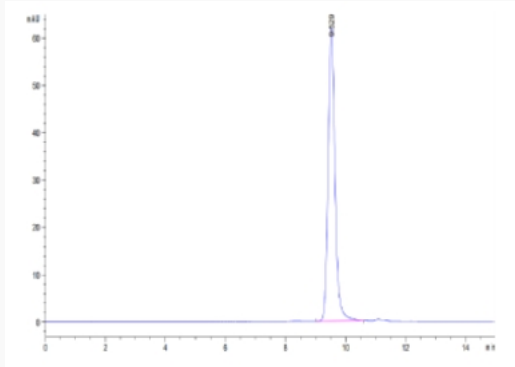
Tel: 1-631-559-9269 1-516-512-3133

Email: [info@creative-biomart.com](mailto:info@creative-biomart.com) Fax: 1-631-938-8127

45-1 Ramsey Road, Shirley, NY 11967, USA



SEC-HPLC



Tel: 1-631-559-9269 1-516-512-3133

Email: [info@creative-biomart.com](mailto:info@creative-biomart.com) Fax: 1-631-938-8127

45-1 Ramsey Road, Shirley, NY 11967, USA