

Recombinant Rat Chrna1 Protein, His-tagged

Cat. No. Chrna1-778R **Lot. No.** (See product label)

SPECIFICATION

Product Overview	Recombinant Rat Chrna1 Protein (Ser21-Phe245) with His tag was expressed in E. coli.
Species	Rat
Source	E.coli
ProteinLength	Ser21-Phe245
Description	Enables acetylcholine-gated cation-selective channel activity. Involved in cation transport and skeletal muscle contraction. Part of acetylcholine-gated channel complex. Human ortholog(s) of this gene implicated in congenital myasthenic syndrome 1A and congenital myasthenic syndrome 1B. Orthologous to human CHRNA1 (cholinergic receptor nicotinic alpha 1 subunit).
Form	Freeze-dried powder
Molecular Mass	Predicted Molecular Mass: 29.9 kDa; Accurate Molecular Mass: 30 kDa
Purity	> 97%
Applications	Positive Control; Immunogen; SDS-PAGE; WB.
Stability	The thermal stability is described by the loss rate. The loss rate was determined by accelerated thermal degradation test, that is, incubate the protein at 37 centigrade for

 Tel: 1-631-559-9269 1-516-512-3133

 Email: info@creative-biomart.com  Fax: 1-631-938-8127

 45-1 Ramsey Road, Shirley, NY 11967, USA

48h, and no obvious degradation and precipitation were observed. The loss rate is less than 5% within the expiration date under appropriate storage condition.

Storage

Avoid repeated freeze/thaw cycles. Store at 2-8 centigrade for one month. Aliquot and store at -80 centigrade for 12 months.

Storage Buffer

PBS, pH7.4, containing 0.01% SKL, 1mM DTT, 5% Trehalose and Proclin300.

Reconstitution

Reconstitute in ddH₂O to a concentration of 0.1-0.5 mg/mL. Do not vortex.

GENE INFORMATION

Gene Name

[Chrna1 cholinergic receptor, nicotinic, alpha 1 \(muscle\) \[Rattus norvegicus \]](#)

Official Symbol

[Chrna1](#)

Synonyms

CHRNA1; cholinergic receptor, nicotinic, alpha 1 (muscle); acetylcholine receptor subunit alpha; cholinergic receptor nicotinic alpha polypeptide 1; cholinergic receptor, nicotinic, alpha polypeptide 1 (muscle);

Gene ID

[79557](#)

mRNA Refseq

[NM_024485](#)

Protein Refseq

[NP_077811](#)

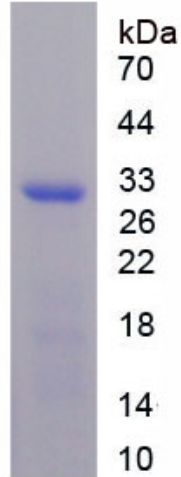
UniProt ID

[P25108](#)

 Tel: 1-631-559-9269 1-516-512-3133

 Email: info@creative-biomart.com  Fax: 1-631-938-8127

 45-1 Ramsey Road, Shirley, NY 11967, USA



 Tel: 1-631-559-9269 1-516-512-3133

 Email: info@creative-biomart.com  Fax: 1-631-938-8127

 45-1 Ramsey Road, Shirley, NY 11967, USA