

Recombinant Mouse Clec2d protein, His-tagged

Cat. No. Clec2d-7853M Lot. No. (See product label)

SPECIFICATION

Product Overview	Recombinant Mouse Clec2d protein(Q91V08)(63-207aa), fused with N-terminal His tag, was expressed in E.coli.
Species	Mouse
Source	E.coli
ProteinLength	63-207aa
Form	If the delivery form is liquid, the default storage buffer is Tris/PBS-based buffer, 5%-50% glycerol. If the delivery form is lyophilized powder, the buffer before lyophilization is Tris/PBS-based buffer, 6% Trehalose, pH 8.0.
Molecular Mass	21.2 kDa
Purity	Greater than 85% as determined by SDS-PAGE.
Storage	Store at -20°C/-80°C upon receipt, aliquoting is necessary for mutiple use. Avoid repeated freeze-thaw cycles.
Reconstitution	We recommend that this vial be briefly centrifuged prior to opening to bring the contents to the bottom. Please reconstitute protein in deionized sterile water to a concentration of 0.1-1.0 mg/mL. We recommend to add 5-50% of glycerol (final concentration) and aliquot for long-term storage at -20°C/-80°C.

 Tel: 1-631-559-9269 1-516-512-3133

 Email: info@creative-biomart.com  Fax: 1-631-938-8127

 45-1 Ramsey Road, Shirley, NY 11967, USA



AA Sequence

LSATKTEQIPVNKTYAACPNWIGVENKCFYFSEYPSNWTFAQAFCAQEAQLARF
DNQDELNFLMRYKANFDSWIGLHRESSEHPWKWTDNTEYNNTIPIRGEERFAYLNN
NGISSTRIYSLRMWICSKLNSYSLHCQTPFFPS

GENE INFORMATION

Gene Name

Clec2d C-type lectin domain family 2, member d [*Mus musculus*]

Official Symbol

Clec2d

Synonyms

CLEC2D; C-type lectin domain family 2, member d; C-type lectin domain family 2 member D; osteoclast inhibitory lectin; C-type lectin-related protein B; lectin-like transmembrane protein; C-type lectin-domain family 2 member D; Clrb; Ocil; Clr-b; MGC123478;

Gene ID

93694

mRNA Refseq

NM_053109

Protein Refseq

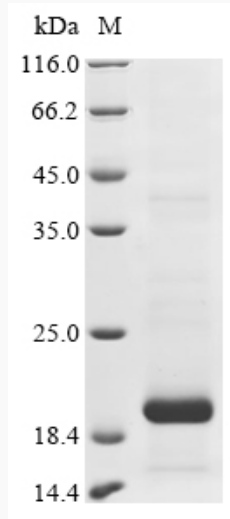
NP_444339

Tel: 1-631-559-9269 1-516-512-3133

Email: info@creative-biomart.com Fax: 1-631-938-8127

45-1 Ramsey Road, Shirley, NY 11967, USA

SDS-PAGE



 Tel: 1-631-559-9269 1-516-512-3133

 Email: info@creative-biomart.com  Fax: 1-631-938-8127

 45-1 Ramsey Road, Shirley, NY 11967, USA