

Recombinant Mouse Clec5a protein, hFc-tagged

Cat. No. Clec5a-8564M Lot. No. (See product label)

SPECIFICATION

Product Overview	Recombinant Mouse Clec5a protein(Q9R007-1)(Tyr26-Lys190), fused with N-terminal hFc tag, was expressed in HEK293.
Species	Mouse
Source	HEK293
ProteinLength	Tyr26-Lys190
Tag	N-hFc
Form	Lyophilized from 0.22µm filtered solution in PBS (pH 7.4). Normally 8% trehalose is added as protectant before lyophilization.
Molecular Mass	The protein has a predicted MW of 46.2 kDa. Due to glycosylation, the protein migrates to 64-68 kDa based on Tris-Bis PAGE result.
Endotoxin	Less than 1EU per µg by the LAL method.
Purity	> 95% as determined by Tris-Bis PAGE;> 95% as determined by HPLC
Storage	Reconstituted protein stable at -80°C for 12 months, 4°C for 1 week. Use a manual defrost freezer and avoid repeated freeze-thaw cycles.
Reconstitution	Centrifuge tubes before opening. Reconstituting to a concentration more than 100

 Tel: 1-631-559-9269 1-516-512-3133

 Email: info@creative-biomart.com  Fax: 1-631-938-8127

 45-1 Ramsey Road, Shirley, NY 11967, USA

µg/ml is recommended. Dissolve the lyophilized protein in distilled water.

GENE INFORMATION

Gene Name Clec5a C-type lectin domain family 5, member a [*Mus musculus*]

Official Symbol Clec5a

Synonyms CLEC5A; C-type lectin domain family 5, member a; C-type lectin domain family 5 member A; C-type lectin superfamily member 5; myeloid DAP12-associating lectin 1; myeloid DAP12-associating lectin-1; type II transmembrane protein MDL-1; C-type (calcium dependent, carbohydrate-recognition domain) lectin, superfamily member 5; Mdl1; Ly100; MDL-1; Clecsf5; MGC129446; MGC129447;

Gene ID 23845

mRNA Refseq NM_001038604

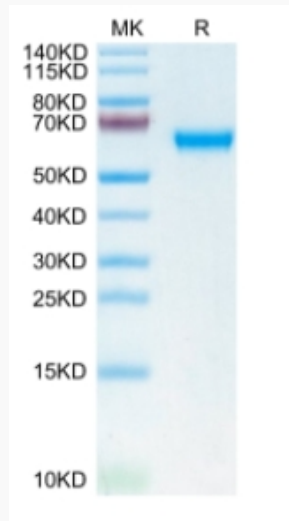
Protein Refseq NP_001033693

 Tel: 1-631-559-9269 1-516-512-3133

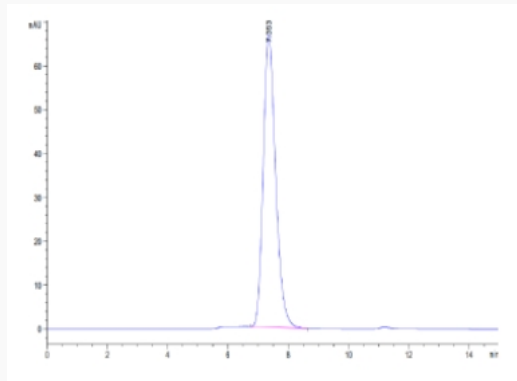
 Email: info@creative-biomart.com  Fax: 1-631-938-8127

 45-1 Ramsey Road, Shirley, NY 11967, USA

Tris-Bis PAGE



SEC-HPLC



 Tel: 1-631-559-9269 1-516-512-3133

 Email: info@creative-biomart.com  Fax: 1-631-938-8127

 45-1 Ramsey Road, Shirley, NY 11967, USA