

## Recombinant Mouse Cma1 Protein, His/GST-tagged

Cat. No. Cma1-508M Lot. No. (See product label)

### SPECIFICATION

<b>Product Overview</b>	Recombinant Mouse Cma1(Leu9~Asn247) fused with His/GST tag at N-terminal was expressed in E. coli.
<b>Species</b>	Mouse
<b>Source</b>	E.coli
<b>ProteinLength</b>	Leu9~Asn247
<b>Description</b>	<p>This gene encodes a serine protease that belongs to the peptidase family S1. It is expressed in mast cells and is thought to function in the degradation of the extracellular matrix, the regulation of submucosal gland secretion, and the generation of vasoactive peptides. The encoded preproprotein undergoes proteolytic processing to generate a functional enzyme with elastase-like activity. Mice lacking the encoded protein exhibit significant attenuation of ischemia-reperfusion injury of the skeletal muscle. This gene is located in a cluster of related mast cell protease genes on chromosome 14.</p>
<b>Form</b>	PBS, pH7.4, containing 0.01% SKL, 1mM DTT, 5% Trehalose and Proclin300.
<b>Molecular Mass</b>	30.32kDa
<b>Endotoxin</b>	<1.0EU per 1g (determined by the LAL method)
<b>Purity</b>	> 98%

 Tel: 1-631-559-9269 1-516-512-3133

 Email: [info@creative-biomart.com](mailto:info@creative-biomart.com)  Fax: 1-631-938-8127

 45-1 Ramsey Road, Shirley, NY 11967, USA

<b>Applications</b>	Positive Control; Immunogen; SDS-PAGE; WB. If bio-activity of the protein is needed, please check active protein.
<b>Stability</b>	The thermal stability is described by the loss rate. The loss rate was determined by accelerated thermal degradation test, that is, incubate the protein at 37 centigrade for 48h, and no obvious degradation and precipitation were observed. The loss rate is less than 5% within the expiration date under appropriate storage condition.
<b>Storage</b>	Avoid repeated freeze/thaw cycles. Store at 2-8 centigrade for one month. Aliquot and store at -80 centigrade for 12 months.
<b>Reconstitution</b>	Reconstitute in PBS or others.

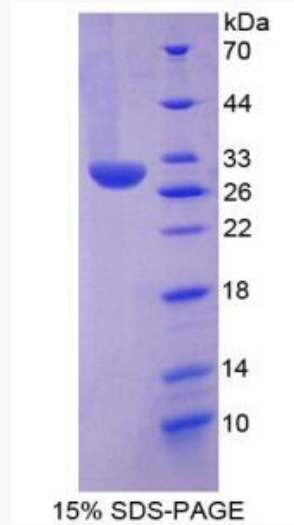
## GENE INFORMATION

<b>Gene Name</b>	<a href="#">Cma1 chymase 1, mast cell [ Mus musculus ]</a>
<b>Official Symbol</b>	<a href="#">Cma1</a>
<b>Synonyms</b>	CMA1; chymase 1, mast cell; chymase; alpha-chymase; mast cell chymase 1; mast cell protease 5; mast cell protease I; Mcp5; Mcp-5; Mcpt5; MMCP-5;
<b>Gene ID</b>	<a href="#">17228</a>
<b>mRNA Refseq</b>	<a href="#">NM_010780</a>
<b>Protein Refseq</b>	<a href="#">NP_034910</a>
<b>UniProt ID</b>	<a href="#">P21844</a>

 Tel: 1-631-559-9269 1-516-512-3133

 Email: [info@creative-biomart.com](mailto:info@creative-biomart.com)  Fax: 1-631-938-8127

 45-1 Ramsey Road, Shirley, NY 11967, USA



Tel: 1-631-559-9269 1-516-512-3133

Email: [info@creative-biomart.com](mailto:info@creative-biomart.com) Fax: 1-631-938-8127

45-1 Ramsey Road, Shirley, NY 11967, USA