

# Recombinant Mouse Cmk1r1 Full Length Transmembrane protein, His-tagged

**Cat. No.** Cmk1r1-1039M    **Lot. No.** (See product label)

## SPECIFICATION

### Product Overview

Recombinant Mouse Cmk1r1 protein(P97468)(1-371aa), fused with N-terminal His tag, was expressed in in vitro E. coli expression system.

### Species

Mouse

### Source

E.coli

### ProteinLength

1-371aa

### Form

If the delivery form is liquid, the default storage buffer is Tris/PBS-based buffer, 5%-50% glycerol.  
If the delivery form is lyophilized powder, the buffer before lyophilization is Tris/PBS-based buffer, 6% Trehalose, pH 8.0.

### Molecular Mass

43.3 kDa

### AA Sequence

MEYDAYNDSGIYDDEYSDFGFGYFVDLEEASPWEAKVAPVFLVVIYSLVCFLGLLGNG  
LVIVIAATFKMKKTVENTVWFVNLAVADFLFNIFLPMHITYAAMDYHWFVFGKAMCKISNF  
LLSHNMYTSVFLLTVISDFRDCISVLLPVWSQNHRSIRLAYMTCSAVWVLAFFLSSPSL  
VFRDTANIHGKITCFNNFSLAAPESPSPHAPHSQVVSTGYSRHHVAVTVTRFLCGFLIPV  
FIITACYLTIVFKLQRNRLAKNKKPFKIIITIIITFFLCWCPYHTLYLLELHHTAVPSSVFSL  
GLPLATAVAIANSCMNPILYVFMGHDFRKFVVALFSRLANALSEDTGPSSYPHSRSF  
TKMSSLNEKASVNEKETSTL

 Tel: 1-631-559-9269    1-516-512-3133

 Email: [info@creative-biomart.com](mailto:info@creative-biomart.com)     Fax: 1-631-938-8127

 45-1 Ramsey Road, Shirley, NY 11967, USA

<b>Purity</b>	Greater than 85% as determined by SDS-PAGE.
<b>Storage</b>	Store at -20°C/-80°C upon receipt, aliquoting is necessary for mutiple use. Avoid repeated freeze-thaw cycles.
<b>Reconstitution</b>	Please reconstitute protein in deionized sterile water to a concentration of 0.1-1.0 mg/mL. We recommend to add 5-50% of glycerol (final concentration) and aliquot for long-term storage at -20°C/-80°C.

## GENE INFORMATION

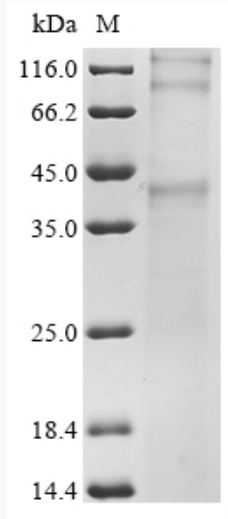
<b>Gene Name</b>	<a href="#">Cmklr1 chemokine-like receptor 1 [ Mus musculus ]</a>
<b>Official Symbol</b>	<a href="#">Cmklr1</a>
<b>Synonyms</b>	CMKLR1; chemokine-like receptor 1; chemerin receptor; chemokine receptor-like 1; G-protein coupled receptor 27; G-protein coupled receptor DEZ; DEZ; Gpcr27; ChemR23; mcmklr1;
<b>Gene ID</b>	<a href="#">14747</a>
<b>mRNA Refseq</b>	<a href="#">NM_008153</a>
<b>Protein Refseq</b>	<a href="#">NP_032179</a>

 Tel: 1-631-559-9269 1-516-512-3133

 Email: [info@creative-biomart.com](mailto:info@creative-biomart.com)  Fax: 1-631-938-8127

 45-1 Ramsey Road, Shirley, NY 11967, USA

**SDS-PAGE**



 Tel: 1-631-559-9269 1-516-512-3133

 Email: [info@creative-biomart.com](mailto:info@creative-biomart.com)  Fax: 1-631-938-8127

 45-1 Ramsey Road, Shirley, NY 11967, USA