

Recombinant Mouse Cndp2 Protein (Met1-Asn475), C-His tagged

Cat. No. Cndp2-6314M Lot. No. (See product label)

SPECIFICATION

Product Overview	Recombinant mouse Cndp2 (Met1-Asn475) fused with the C-terminal His tag was expressed in mammalian cells.
Species	Mouse
Source	Mammalian Cells
ProteinLength	Met1-Asn475
Form	Lyophilized powder/frozen liquid
Molecular Mass	52.36 kDa
Purity	> 90 % as determined by SDS-PAGE
Notes	For research use only.
Storage	Use a manual defrost freezer and avoid repeated freeze thaw cycles. Store at 2 to 8 centigrade for one week. Store at -20 to -80 centigrade for twelve months from the date of receipt.
Storage Buffer	Supplied as solution form in PBS or lyophilized from PBS.
Reconstitution	Reconstitute in sterile water for a stock solution.

 Tel: 1-631-559-9269 1-516-512-3133

 Email: info@creative-biomart.com  Fax: 1-631-938-8127

 45-1 Ramsey Road, Shirley, NY 11967, USA

Shipping

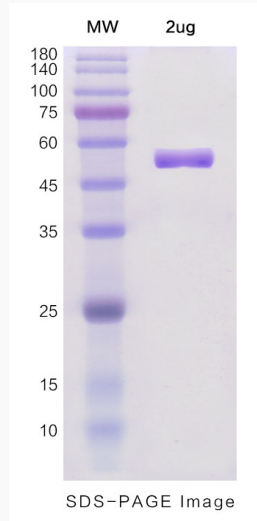
They are shipped out with dry ice/blue ice unless customers require otherwise.

GENE INFORMATION

Gene Name	Cndp2 CNDP dipeptidase 2 (metallopeptidase M20 family) [Mus musculus (house mouse)]
Official Symbol	Cndp2
Synonyms	CNDP2; CNDP dipeptidase 2 (metallopeptidase M20 family); cytosolic non-specific dipeptidase; peptidase 1; peptidase A; cytosolic nonspecific dipeptidase; glutamate carboxypeptidase-like protein 1; Cn2; Pep1; Dip-2; Pep-1; C76600; 0610010E05Rik;
Gene ID	66054
mRNA Refseq	NM_023149
Protein Refseq	NP_075638
UniProt ID	Q9D1A2

 Tel: 1-631-559-9269 1-516-512-3133 Email: info@creative-biomart.com  Fax: 1-631-938-8127 45-1 Ramsey Road, Shirley, NY 11967, USA

SDS-PAGE



 Tel: 1-631-559-9269 1-516-512-3133

 Email: info@creative-biomart.com  Fax: 1-631-938-8127

 45-1 Ramsey Road, Shirley, NY 11967, USA