

## Active Recombinant Mouse Cntf Protein (Met1-Met198), C-His tagged, Animal-free, Carrier-free

Cat. No. Cntf-17M Lot. No. (See product label)

### SPECIFICATION

<b>Product Overview</b>	Recombinant Mouse Cntf Protein (Met1-Met198) with C-His tag was expressed in E. coli and Animal-free as well as Carrier-free.
<b>Species</b>	Mouse
<b>Source</b>	E.coli
<b>ProteinLength</b>	Met1-Met198
<b>Description</b>	Ciliary Neurotrophic Factor (CNTF) is the member of IL-6 cytokine family and mainly expressed in the nervous system. Mouse CNTF shares 84% sequence homology with human CNTF. CNTF is 22.9 kDa neurotrophic factor containing 110 residues, which shows multiple effects in vertebrate retinogenesis. Besides, CNTF acts as a promoter that not only accelerates adult neurogenesis but also increases the survival of neuron after injury.
<b>Form</b>	Lyophilized
<b>Bio-activity</b>	Measure by its ability to induce proliferation in TF-1 cells. The ED50 for this effect is < 10 ng/mL. The specific activity of recombinant mouse CNTF is > 1 × 10 <sup>5</sup> IU/mg.
<b>Molecular Mass</b>	The protein has a calculated MW of 23.40 kDa. The protein migrates as 17-25 kDa under reducing condition (SDS-PAGE analysis).

 Tel: 1-631-559-9269 1-516-512-3133

 Email: [info@creative-biomart.com](mailto:info@creative-biomart.com)  Fax: 1-631-938-8127

 45-1 Ramsey Road, Shirley, NY 11967, USA

<b>Endotoxin</b>	< 0.1 EU/μg of the protein by the LAL method.
<b>Purity</b>	>98% as determined by SDS-PAGE analysis.
<b>Storage</b>	This product is stable after storage at: -20 centigrade for 12 months in lyophilized state from date of receipt. -20 or -80 centigrade for 1 month under sterile conditions after reconstitution. Avoid repeated freeze/thaw cycles.
<b>Storage Buffer</b>	Lyophilized from a 0.2 μm filtered solution of PBS, pH 7.4.
<b>Reconstitution</b>	It is recommended to reconstitute the lyophilized protein in sterile H2O to a concentration not less than 200 μg/mL and incubate the stock solution for at least 20 min to ensure sufficient re-dissolved.
<b>Shipping</b>	The product is shipped with polar packs. Upon receipt, store it immediately at -20 centigrade or lower for long term storage.

## GENE INFORMATION

<b>Gene Name</b>	<a href="#">Cntf ciliary neurotrophic factor [ Mus musculus (house mouse) ]</a>
<b>Official Symbol</b>	<a href="#">Cntf</a>
<b>Synonyms</b>	CNTF; ciliary neurotrophic factor; AI429687; MGC41235;
<b>Gene ID</b>	<a href="#">12803</a>
<b>mRNA Refseq</b>	<a href="#">NM_170786</a>
<b>Protein Refseq</b>	<a href="#">NP_740756</a>

 Tel: 1-631-559-9269 1-516-512-3133

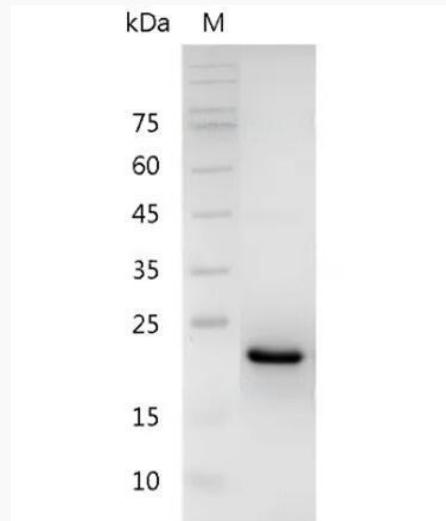
 Email: [info@creative-biomart.com](mailto:info@creative-biomart.com)  Fax: 1-631-938-8127

 45-1 Ramsey Road, Shirley, NY 11967, USA

UniProt ID

P51642

**SDS-PAGE analysis  
of recombinant  
mouse CNTF.**



 Tel: 1-631-559-9269 1-516-512-3133

 Email: [info@creative-biomart.com](mailto:info@creative-biomart.com)  Fax: 1-631-938-8127

 45-1 Ramsey Road, Shirley, NY 11967, USA