

## Recombinant Mouse Col2a1 protein, His-tagged

Cat. No. Col2a1-1278M Lot. No. (See product label)

### SPECIFICATION

<b>Product Overview</b>	Recombinant Mouse Col2a1 protein(Thr1307~Thr1383), fused with N-terminal His tag, was expressed in E. coli.
<b>Species</b>	Mouse
<b>Source</b>	E.coli
<b>ProteinLength</b>	Thr1307~Thr1383
<b>Tag</b>	N-His
<b>Form</b>	PBS, pH7.4, containing 0.01% SKL, 1mM DTT, 5% Trehalose and Proclin300.
<b>Molecular Mass</b>	10.0kDa
<b>Endotoxin</b>	<1.0EU per 1µg (determined by the LAL method)
<b>Purity</b>	> 97%
<b>Storage</b>	Avoid repeated freeze/thaw cycles. Store at 2-8°C for one month. Aliquot and store at -80°C for 12 months.
<b>Reconstitution</b>	Reconstitute in 10mM PBS (pH7.4) to a concentration of 0.1-1.0 mg/mL. Do not vortex.

 Tel: 1-631-559-9269 1-516-512-3133

 Email: [info@creative-biomart.com](mailto:info@creative-biomart.com)  Fax: 1-631-938-8127

 45-1 Ramsey Road, Shirley, NY 11967, USA

## GENE INFORMATION

**Gene Name** [Col2a1 collagen, type II, alpha 1 \[ Mus musculus \]](#)

**Official Symbol** [Col2a1](#)

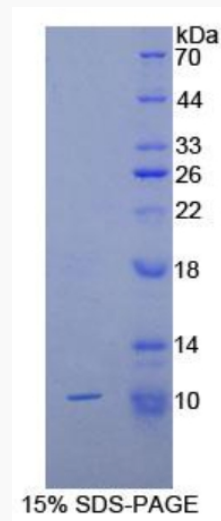
**Synonyms** COL2A1; collagen, type II, alpha 1; collagen alpha-1(II) chain; chondrocalcin; alpha-1 type II collagen; disproportionate micromelia; procollagen, type II, alpha 1; Dmm; Col2; Del1; Col2a; Col2a-1; M100856; Rgsc856; MGC90638;

**Gene ID** [12824](#)

**mRNA Refseq** [NM\\_001113515](#)

**Protein Refseq** [NP\\_001106987](#)

### SDS-PAGE



 Tel: 1-631-559-9269 1-516-512-3133

 Email: [info@creative-biomart.com](mailto:info@creative-biomart.com)  Fax: 1-631-938-8127

 45-1 Ramsey Road, Shirley, NY 11967, USA