

Recombinant Mouse Col6a1 Protein, His-tagged

Cat. No. Col6a1-821M Lot. No. (See product label)

SPECIFICATION

Product Overview	Recombinant Mouse Col6a1 Protein (Ser624-Lys800) with His tag was expressed in E. coli.
Species	Mouse
Source	E.coli
ProteinLength	Ser624-Lys800
Description	<p>Predicted to enable collagen binding activity and platelet-derived growth factor binding activity. Acts upstream of or within cellular response to amino acid stimulus. Located in extracellular matrix and sarcolemma. Is expressed in several structures, including alimentary system; brain; genitourinary system; heart and pericardium; and sensory organ. Used to study Bethlem myopathy and Ullrich congenital muscular dystrophy. Human ortholog(s) of this gene implicated in Ullrich congenital muscular dystrophy. Orthologous to human COL6A1 (collagen type VI alpha 1 chain).</p>
Form	Freeze-dried powder
Molecular Mass	Predicted Molecular Mass: 20.8 kDa; Accurate Molecular Mass: 21 kDa
Purity	> 95%
Applications	Cell culture; Activity Assays.

 Tel: 1-631-559-9269 1-516-512-3133

 Email: info@creative-biomart.com  Fax: 1-631-938-8127

 45-1 Ramsey Road, Shirley, NY 11967, USA

Stability	The thermal stability is described by the loss rate. The loss rate was determined by accelerated thermal degradation test, that is, incubate the protein at 37 centigrade for 48h, and no obvious degradation and precipitation were observed. The loss rate is less than 5% within the expiration date under appropriate storage condition.
Storage	Avoid repeated freeze/thaw cycles. Store at 2-8 centigrade for one month. Aliquot and store at -80 centigrade for 12 months.
Storage Buffer	20mM Tris, 150mM NaCl, pH8.0, containing 1mM EDTA, 1mM DTT, 0.01% SKL, 5% Trehalose and Proclin300.
Reconstitution	Reconstitute in 20mM Tris, 150mM NaCl (pH8.0) to a concentration of 0.1-1.0 mg/mL. Do not vortex.

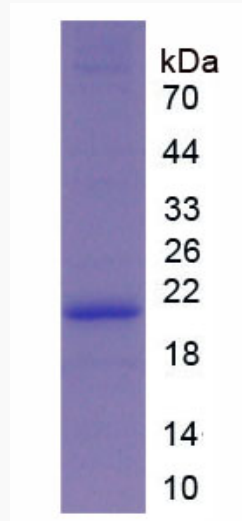
GENE INFORMATION

Gene Name	Col6a1 collagen, type VI, alpha 1 [<i>Mus musculus</i> (house mouse)]
Official Symbol	Col6a1
Synonyms	COL6A1; collagen, type VI, alpha 1; collagen alpha-1(VI) chain; procollagen, type VI, alpha 1; Col6a-1; AI747156;
Gene ID	12833
mRNA Refseq	NM_009933
Protein Refseq	NP_034063
UniProt ID	Q04857

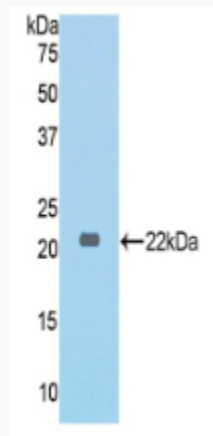
 Tel: 1-631-559-9269 1-516-512-3133

 Email: info@creative-biomart.com  Fax: 1-631-938-8127

 45-1 Ramsey Road, Shirley, NY 11967, USA



WB

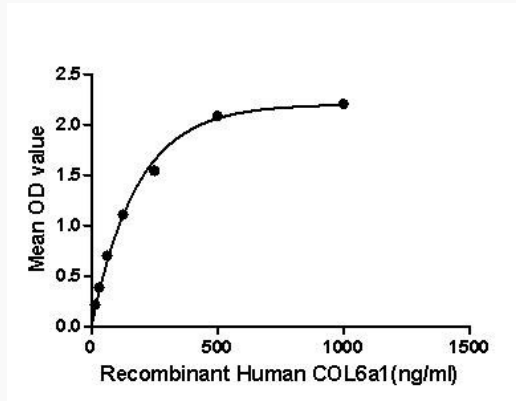


 Tel: 1-631-559-9269 1-516-512-3133

 Email: info@creative-biomart.com  Fax: 1-631-938-8127

 45-1 Ramsey Road, Shirley, NY 11967, USA

Binding activity



 Tel: 1-631-559-9269 1-516-512-3133

 Email: info@creative-biomart.com  Fax: 1-631-938-8127

 45-1 Ramsey Road, Shirley, NY 11967, USA