

Adult Mouse Colon Whole Cell Lysate

Cat. No. Colon-069MCL **Lot. No.** (See product label)

SPECIFICATION

Product Overview	Ready-to-use whole cell lysates are derived from cell lines or tissues using highly refined extraction protocols to ensure exceptionally high quality, protein integrity and lot-to-lot reproducibility. All extracts are tested by SDS-PAGE using 4-20% gradient gels and immunoblot analysis using antibodies to key cell signaling components to confirm the presence of both high molecular weight and low molecular weight proteins.
Species	Mouse
Form	Liquid (sterile filtered)
Specificity	Tissues were washed exhaustively with PBS to remove blood and other debris. A lysate was prepared by homogenizing the tissue and washing the cells in cold PBS. Washed cells were incubated at 4 centigrade in modified RIPA buffer to lyse the cells. Protein integrity is ensured using a cocktail of protease inhibitors with broad specificity for the inhibition of aspartic, cysteine, and serine proteases as well as aminopeptidases (0.1 mM AEBSF HCl, 0.08 μM Aprotinin, 5 μM Bestatin, 1.5 μM E-64, 2 μM Leupeptin Hemisulfate and 1 μM Pepstatin A). The following phosphatase inhibitors were also added: 1 mM NaF and 1 mM Na ₃ VO ₄ . Cell debris was removed by centrifugation and membrane filtration. Protein concentration was determined by BCA assay using a commercially available kit. Protein concentration was adjusted to 1 mg/mL with 2X Sample buffer.
Applications	SDS-PAGE

 Tel: 1-631-559-9269 1-516-512-3133

 Email: info@creative-biomart.com  Fax: 1-631-938-8127

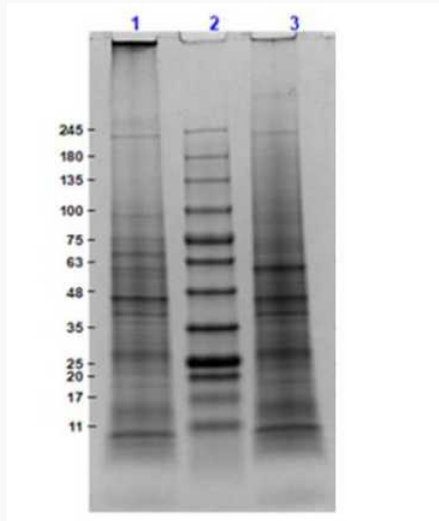
 45-1 Ramsey Road, Shirley, NY 11967, USA

Cell Line	Primary tissue
Lysate Fractionation	Whole Cell Lysate
Lysate Stimulation	Not Stimulated
Culture Type	Primary Tissue
Induction	None (Control)
Concentration	1.0 mg/mL by BCA assay
Buffer	1x SDS-PAGE Sample Buffer (62.5 mM Tris HCl, 2% SDS, 10% Glycerol and 0.005% bromophenol blue, pH 6.8)
Preservative	None
Stabilizer	10% (v/v) Glycerol
Shipping	Dry Ice
Storage	Store vial at -70 centigrade or COLDER. For extended storage, aliquot contents to minimize freeze/thaw cycles.
Expiration	Expiration date is three months from date of receipt.

 Tel: 1-631-559-9269 1-516-512-3133

 Email: info@creative-biomart.com  Fax: 1-631-938-8127

 45-1 Ramsey Road, Shirley, NY 11967, USA

SDS-PAGE

SDS-PAGE Results of Mouse Colon, Adult, Whole Cell Lysate.

Lane 1: Mouse Colon, Adult, Whole Cell Lysate (10 µg) Reduced.

Lane 2: Opal Prestained Molecular Weight Markers.

Lane 3: Mouse Colon, Adult, Whole Cell Lysate (10 µg) Non-Reduced.

Results show wide range of molecular weight bands with no sign of degradation.

 Tel: 1-631-559-9269 1-516-512-3133

 Email: info@creative-biomart.com  Fax: 1-631-938-8127

 45-1 Ramsey Road, Shirley, NY 11967, USA