

## Recombinant Rat Comp protein, His-tagged

Cat. No. Comp-5796R Lot. No. (See product label)

### SPECIFICATION

<b>Product Overview</b>	Recombinant Rat Comp aa. (Arg35~Ile179 (Accession # P35444)) fused with N-terminal His tag was produced in E. coli cells.
<b>Species</b>	Rat
<b>Source</b>	E.coli
<b>ProteinLength</b>	Arg35~Ile179
<b>Form</b>	Freeze-dried powder
<b>Molecular Mass</b>	17kDa as determined by SDS-PAGE reducing conditions
<b>Endotoxin</b>	<1.0EU per 1g (determined by the LAL method)
<b>Purity</b>	>95%
<b>Characteristic</b>	The isoelectric point is 6.8.
<b>Applications</b>	SDS-PAGE; WB; ELISA; IP.
<b>Stability</b>	The thermal stability is described by the loss rate. The loss rate was determined by accelerated thermal degradation test, that is, incubate the protein at 37°C for 48h, and no obvious degradation and precipitation were observed. The loss rate is less than 5% within the expiration date under appropriate storage condition.

 Tel: 1-631-559-9269 1-516-512-3133

 Email: [info@creative-biomart.com](mailto:info@creative-biomart.com)  Fax: 1-631-938-8127

 45-1 Ramsey Road, Shirley, NY 11967, USA



<b>Storage</b>	Avoid repeated freeze/thaw cycles. Store at 2-8°C for one month. Aliquot and store at -80°C for 12 months.
<b>Storage buffer</b>	Supplied as lyophilized form in PBS, pH7.4, containing 5% trehalose, 0.01% sarcosyl.
<b>Reconstitution</b>	Reconstitute in sterile PBS, pH7.2-pH7.4.

## GENE INFORMATION

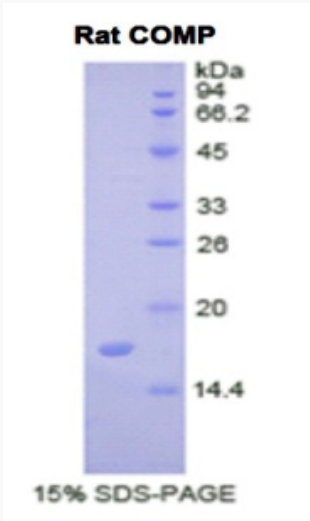
<b>Gene Name</b>	Comp cartilage oligomeric matrix protein [ <i>Rattus norvegicus</i> (Norway rat) ]
<b>Official Symbol</b>	Comp
<b>Synonyms</b>	cartilage oligomeric matrix protein
<b>Gene ID</b>	25304
<b>mRNA Refseq</b>	NM_012834.1
<b>Protein Refseq</b>	NP_036966.1
<b>UniProt ID</b>	P35444

 Tel: 1-631-559-9269 1-516-512-3133

 Email: [info@creative-biomart.com](mailto:info@creative-biomart.com)  Fax: 1-631-938-8127

 45-1 Ramsey Road, Shirley, NY 11967, USA

SDS-PAGE



 Tel: 1-631-559-9269 1-516-512-3133

 Email: [info@creative-biomart.com](mailto:info@creative-biomart.com)  Fax: 1-631-938-8127

 45-1 Ramsey Road, Shirley, NY 11967, USA