

## Recombinant Rat Comt protein, His-tagged

**Cat. No.** Comt-1671R    **Lot. No.** (See product label)

### SPECIFICATION

<b>Product Overview</b>	Recombinant Rat Comt aa. (Gly63~Ser264) fused with N-terminal His tag was produced in E. coli cells.
<b>Species</b>	Rat
<b>Source</b>	E.coli
<b>ProteinLength</b>	Gly63~Ser264
<b>Description</b>	Catalyzes the conversion of S-adenosyl-L-methionine and catechol to S-adenosyl-L-homocysteine and guaiacol.
<b>Form</b>	Freeze-dried powder
<b>Molecular Mass</b>	24kDa as determined by SDS-PAGE reducing conditions.
<b>Endotoxin</b>	<1.0EU per 1ug (determined by the LAL method)
<b>Purity</b>	>95%
<b>Applications</b>	SDS-PAGE; WB; ELISA; IP; CoIP; Purification; Amine Reactive Labeling.
<b>Stability</b>	The thermal stability is described by the loss rate. The loss rate was determined by accelerated thermal degradation test, that is, incubate the protein at 37°C for 48h, and no obvious degradation and precipitation were observed. The loss rate is less

 Tel: 1-631-559-9269    1-516-512-3133

 Email: [info@creative-biomart.com](mailto:info@creative-biomart.com)     Fax: 1-631-938-8127

 45-1 Ramsey Road, Shirley, NY 11967, USA



than 5% within the expiration date under appropriate storage condition.

**Storage**

Avoid repeated freeze/thaw cycles. Store at 2-8°C for one month. Aliquot and store at -80°C for 12 months.

**Concentration**

200µg/mL

**Storage buffer**

PBS, pH7.4, containing 1mM DTT, 5% trehalose, 0.01% sarcosyl and Proclin300.

**Reconstitution**

Reconstitute in PBS (pH7.4) to a concentration of 0.1-1.0 mg/mL. Do not vortex.

**Isoelectric Point**

5.4

## GENE INFORMATION

**Gene Name**

Comt catechol-O-methyltransferase [ *Rattus norvegicus* (Norway rat) ]

**Official Symbol**

Comt

**Synonyms**

Comt; catechol-O-methyltransferase; catechol O-methyltransferase; catecholamine-O-methyltransferase

**Gene ID**

24267

**mRNA Refseq**

NM\_012531.2

**Protein Refseq**

NP\_036663.1

**UniProt ID**

P22734

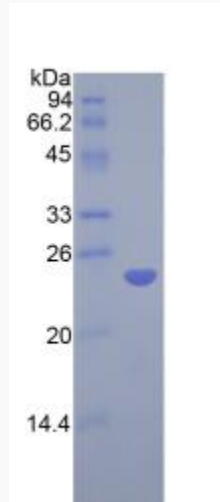
Tel: 1-631-559-9269 1-516-512-3133

Email: [info@creative-biomart.com](mailto:info@creative-biomart.com) Fax: 1-631-938-8127

45-1 Ramsey Road, Shirley, NY 11967, USA



SDS-PAGE



Tel: 1-631-559-9269 1-516-512-3133

Email: [info@creative-biomart.com](mailto:info@creative-biomart.com) Fax: 1-631-938-8127

45-1 Ramsey Road, Shirley, NY 11967, USA