

## Recombinant Mouse Comt Protein, His-tagged

**Cat. No.** Comt-828M    **Lot. No.** (See product label)

### SPECIFICATION

<b>Product Overview</b>	Recombinant Mouse Comt Protein (Arg20-Ser265) with His tag was expressed in E. coli.
<b>Species</b>	Mouse
<b>Source</b>	E.coli
<b>ProteinLength</b>	Arg20-Ser265
<b>Description</b>	Enables catechol O-methyltransferase activity. Acts upstream of or within cellular response to phosphate starvation and dopamine catabolic process. Located in mitochondrion. Is expressed in several structures, including alimentary system; cardiovascular system; central nervous system; genitourinary system; and sensory organ. Used to study cognitive disorder and pre-eclampsia. Human ortholog(s) of this gene implicated in several diseases, including attention deficit hyperactivity disorder; autoimmune disease of skin and connective tissue (multiple); bulimia nervosa; cognitive disorder (multiple); and reproductive organ cancer (multiple). Orthologous to human COMT (catechol-O-methyltransferase).
<b>Form</b>	Freeze-dried powder
<b>Molecular Mass</b>	Predicted Molecular Mass: 31.2 kDa; Accurate Molecular Mass: 29 kDa
<b>Purity</b>	> 95%

 Tel: 1-631-559-9269    1-516-512-3133

 Email: [info@creative-biomart.com](mailto:info@creative-biomart.com)     Fax: 1-631-938-8127

 45-1 Ramsey Road, Shirley, NY 11967, USA

<b>Applications</b>	Positive Control; Immunogen; SDS-PAGE; WB.
<b>Stability</b>	The thermal stability is described by the loss rate. The loss rate was determined by accelerated thermal degradation test, that is, incubate the protein at 37 centigrade for 48h, and no obvious degradation and precipitation were observed. The loss rate is less than 5% within the expiration date under appropriate storage condition.
<b>Storage</b>	Avoid repeated freeze/thaw cycles. Store at 2-8 centigrade for one month. Aliquot and store at -80 centigrade for 12 months.
<b>Storage Buffer</b>	20mM Tris, 150mM NaCl, pH8.0, containing 1mM EDTA, 1mM DTT, 0.01% SKL, 5% Trehalose and Proclin300.
<b>Reconstitution</b>	Reconstitute in 20mM Tris, 150mM NaCl (pH8.0) to a concentration of 0.1-1.0 mg/mL. Do not vortex.

## GENE INFORMATION

<b>Gene Name</b>	<a href="#">Comt catechol-O-methyltransferase [ Mus musculus (house mouse) ]</a>
<b>Official Symbol</b>	<a href="#">Comt</a>
<b>Synonyms</b>	COMT; catechol-O-methyltransferase; catechol O-methyltransferase; catechol-O-methyltransferase 1; Comt1; D16Wsu103e; D330014B15Rik;
<b>Gene ID</b>	<a href="#">12846</a>
<b>mRNA Refseq</b>	<a href="#">NM_001111062</a>
<b>Protein Refseq</b>	<a href="#">NP_001104532</a>

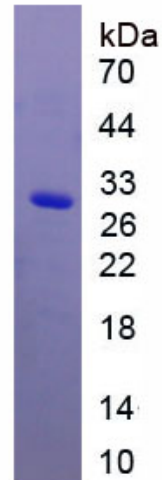
 Tel: 1-631-559-9269 1-516-512-3133

 Email: [info@creative-biomart.com](mailto:info@creative-biomart.com)  Fax: 1-631-938-8127

 45-1 Ramsey Road, Shirley, NY 11967, USA

UniProt ID

O88587



 Tel: 1-631-559-9269 1-516-512-3133

 Email: [info@creative-biomart.com](mailto:info@creative-biomart.com)  Fax: 1-631-938-8127

 45-1 Ramsey Road, Shirley, NY 11967, USA