

Recombinant Rat Comt Protein, His-tagged

Cat. No. Comt-829R **Lot. No.** (See product label)

SPECIFICATION

Product Overview	Recombinant Rat Comt Protein (Arg20-Ser264) with His tag was expressed in E. coli.
Species	Rat
Source	E.coli
ProteinLength	Arg20-Ser264
Description	Enables catechol O-methyltransferase activity. Involved in several processes, including learning or memory; negative regulation of smooth muscle cell proliferation; and regulation of cellular amine metabolic process. Located in several cellular components, including cell body; dendritic spine; and postsynaptic membrane. Used to study Parkinsonism and hypertension. Biomarker of hypertension. Human ortholog(s) of this gene implicated in several diseases, including attention deficit hyperactivity disorder; autoimmune disease of skin and connective tissue (multiple); bulimia nervosa; cognitive disorder (multiple); and reproductive organ cancer (multiple). Orthologous to human COMT (catechol-O-methyltransferase).
Form	Freeze-dried powder
Molecular Mass	Predicted Molecular Mass: 31.7 kDa; Accurate Molecular Mass: 29 kDa
Purity	> 95%
Applications	Positive Control; Immunogen; SDS-PAGE; WB.

 Tel: 1-631-559-9269 1-516-512-3133

 Email: info@creative-biomart.com  Fax: 1-631-938-8127

 45-1 Ramsey Road, Shirley, NY 11967, USA

Stability	The thermal stability is described by the loss rate. The loss rate was determined by accelerated thermal degradation test, that is, incubate the protein at 37 centigrade for 48h, and no obvious degradation and precipitation were observed. The loss rate is less than 5% within the expiration date under appropriate storage condition.
Storage	Avoid repeated freeze/thaw cycles. Store at 2-8 centigrade for one month. Aliquot and store at -80 centigrade for 12 months.
Storage Buffer	20mM Tris, 150mM NaCl, pH8.0, containing 1mM EDTA, 1mM DTT, 0.01% SKL, 5% Trehalose and Proclin300.
Reconstitution	Reconstitute in 20mM Tris, 150mM NaCl (pH8.0) to a concentration of 0.1-1.0 mg/mL. Do not vortex.

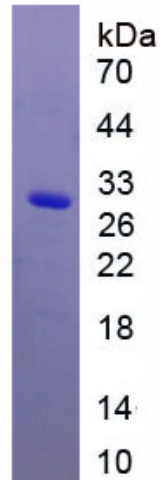
GENE INFORMATION

Gene Name	Comt catechol-O-methyltransferase [<i>Rattus norvegicus</i> (Norway rat)]
Official Symbol	Comt
Synonyms	COMT; catechol-O-methyltransferase; catechol O-methyltransferase; catecholamine-O-methyltransferase;
Gene ID	24267
mRNA Refseq	NM_012531
Protein Refseq	NP_036663
UniProt ID	P22734

 Tel: 1-631-559-9269 1-516-512-3133

 Email: info@creative-biomart.com  Fax: 1-631-938-8127

 45-1 Ramsey Road, Shirley, NY 11967, USA



Tel: 1-631-559-9269 1-516-512-3133

Email: info@creative-biomart.com Fax: 1-631-938-8127

45-1 Ramsey Road, Shirley, NY 11967, USA