

Recombinant Rat Coro1a protein, His & T7-tagged

Cat. No. Coro1a-1669R Lot. No. (See product label)

SPECIFICATION

| | |
|-------------------------|---|
| Product Overview | Recombinant Rat Coro1a aa. (Met1~Glu204 (Accession # Q91ZN1)) fused with N-terminal His & T7 tag was produced in E. coli cells. |
| Species | Rat |
| Source | E.coli |
| ProteinLength | Met1~Glu204 |
| Description | Actin binding protein; human homolog may be a component of the cytoskeleton and may be involved in mitosis. |
| Form | Freeze-dried powder |
| Molecular Mass | Predicted Molecular Mass: 25.7kDa |
| Endotoxin | <1.0EU per 1ug (determined by the LAL method) |
| Purity | >95% |
| Applications | SDS-PAGE; WB; ELISA; IP. |
| Stability | The thermal stability is described by the loss rate. The loss rate was determined by accelerated thermal degradation test, that is, incubate the protein at 37°C for 48h, and no obvious degradation and precipitation were observed. The loss rate is less |

 Tel: 1-631-559-9269 1-516-512-3133

 Email: info@creative-biomart.com  Fax: 1-631-938-8127

 45-1 Ramsey Road, Shirley, NY 11967, USA

than 5% within the expiration date under appropriate storage condition.

Storage

Avoid repeated freeze/thaw cycles. Store at 2-8°C for one month. Aliquot and store at -80°C for 12 months.

Storage buffer

Supplied as lyophilized form in PBS, pH7.4, containing 5% trehalose, 0.01% sarcosyl.

Reconstitution

Reconstitute in sterile PBS, pH7.2-pH7.4.

Isoelectric Point

5.8

GENE INFORMATION

Gene Name

[Coro1a coronin 1A \[Rattus norvegicus \(Norway rat\) \]](#)

Official Symbol

[Coro1a](#)

Synonyms

Coro1a; coronin 1A; coronin-1A; TACO; clipin-A; coronin, actin binding protein 1A; coronin-like protein A; tryptophan aspartate-containing coat protein

Gene ID

[155151](#)

mRNA Refseq

[NM_130411.2](#)

Protein Refseq

[NP_569095.1](#)

UniProt ID

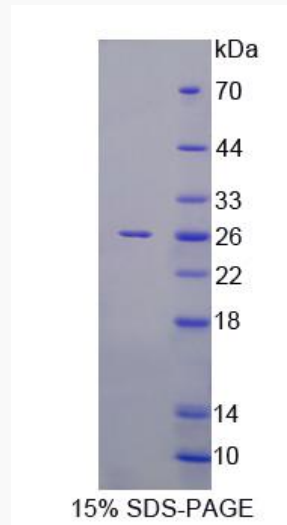
[Q91ZN1](#)

 Tel: 1-631-559-9269 1-516-512-3133

 Email: info@creative-biomart.com  Fax: 1-631-938-8127

 45-1 Ramsey Road, Shirley, NY 11967, USA

SDS-PAGE



 Tel: 1-631-559-9269 1-516-512-3133

 Email: info@creative-biomart.com  Fax: 1-631-938-8127

 45-1 Ramsey Road, Shirley, NY 11967, USA