

## Recombinant Mouse Cp Protein, His&GST-tagged

Cat. No. Cp-832M Lot. No. (See product label)

### SPECIFICATION

<b>Product Overview</b>	Recombinant Mouse Cp Protein (Glu57-Arg87) with His&GST tag was expressed in E. coli.
<b>Species</b>	Mouse
<b>Source</b>	E.coli
<b>ProteinLength</b>	Glu57-Arg87
<b>Description</b>	The protein encoded by this gene is a copper-containing glycoprotein found soluble in the serum and GPI-anchored in other tissues. It oxidizes Fe(II) to Fe(III) and is proposed to play an important role in iron homeostasis. In humans mutations of this gene cause aceruloplasminemia, which is characterized by retinal degeneration, diabetes, anemia and neurological symptoms. In mouse deficiency of this gene in combination with a deficiency of its homolog hephaestin causes retinal degeneration and serves as a pathophysiological model for aceruloplasminemia and age-related macular degeneration. Alternative splicing results in multiple transcript variants that encode different protein isoforms.
<b>Form</b>	Freeze-dried powder
<b>Molecular Mass</b>	Predicted Molecular Mass: 33.4 kDa; Accurate Molecular Mass: 37 kDa
<b>Purity</b>	> 90%

 Tel: 1-631-559-9269 1-516-512-3133

 Email: [info@creative-biomart.com](mailto:info@creative-biomart.com)  Fax: 1-631-938-8127

 45-1 Ramsey Road, Shirley, NY 11967, USA

<b>Applications</b>	Positive Control; Immunogen; SDS-PAGE; WB.
<b>Stability</b>	The thermal stability is described by the loss rate. The loss rate was determined by accelerated thermal degradation test, that is, incubate the protein at 37 centigrade for 48h, and no obvious degradation and precipitation were observed. The loss rate is less than 5% within the expiration date under appropriate storage condition.
<b>Storage</b>	Avoid repeated freeze/thaw cycles. Store at 2-8 centigrade for one month. Aliquot and store at -80 centigrade for 12 months.
<b>Storage Buffer</b>	20mM Tris, 150mM NaCl, pH8.0, containing 1mM EDTA, 1mM DTT, 0.01% SKL, 5% Trehalose and Proclin300.
<b>Reconstitution</b>	Reconstitute in 20mM Tris, 150mM NaCl (pH8.0) to a concentration of 0.1-1.0 mg/mL. Do not vortex.

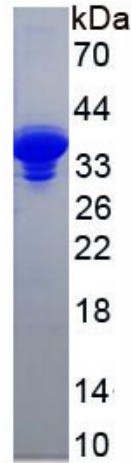
## GENE INFORMATION

<b>Gene Name</b>	<a href="#">Cp ceruloplasmin [ Mus musculus (house mouse) ]</a>
<b>Official Symbol</b>	<a href="#">Cp</a>
<b>Synonyms</b>	CP; ceruloplasmin; ferroxidase; D3Ert555e;
<b>Gene ID</b>	<a href="#">12870</a>
<b>mRNA Refseq</b>	<a href="#">NM_001042611</a>
<b>Protein Refseq</b>	<a href="#">NP_001036076</a>
<b>UniProt ID</b>	<a href="#">Q61147</a>

 Tel: 1-631-559-9269 1-516-512-3133

 Email: [info@creative-biomart.com](mailto:info@creative-biomart.com)  Fax: 1-631-938-8127

 45-1 Ramsey Road, Shirley, NY 11967, USA



Tel: 1-631-559-9269 1-516-512-3133

Email: [info@creative-biomart.com](mailto:info@creative-biomart.com) Fax: 1-631-938-8127

45-1 Ramsey Road, Shirley, NY 11967, USA