

Recombinant Mouse Cpa2 Protein (Gln17-Tyr417), C-His tagged

Cat. No. Cpa2-5769M Lot. No. (See product label)

SPECIFICATION

Product Overview	Recombinant mouse Cpa2 (Gln17-Tyr417) fused with the C-terminal His tag was expressed in mammalian cells.
Species	Mouse
Source	Mammalian Cells
ProteinLength	Gln17-Tyr417
Form	Lyophilized powder/frozen liquid
Molecular Mass	44.11 kDa
Purity	> 90 % as determined by SDS-PAGE
Notes	For research use only.
Storage	Use a manual defrost freezer and avoid repeated freeze thaw cycles. Store at 2 to 8 centigrade for one week. Store at -20 to -80 centigrade for twelve months from the date of receipt.
Storage Buffer	Supplied as solution form in PBS or lyophilized from PBS.
Reconstitution	Reconstitute in sterile water for a stock solution.

 Tel: 1-631-559-9269 1-516-512-3133

 Email: info@creative-biomart.com  Fax: 1-631-938-8127

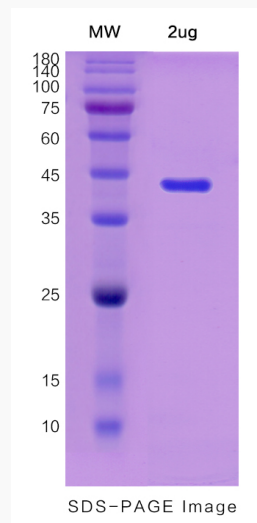
 45-1 Ramsey Road, Shirley, NY 11967, USA

Shipping They are shipped out with dry ice/blue ice unless customers require otherwise.

GENE INFORMATION

Gene Name	Cpa2 carboxypeptidase A2, pancreatic [<i>Mus musculus</i> (house mouse)]
Official Symbol	Cpa2
Synonyms	CPA2; carboxypeptidase A2, pancreatic; carboxypeptidase A2; MGC107514;
Gene ID	232680
mRNA Refseq	NM_001024698
Protein Refseq	NP_001019869
UniProt ID	Q504N0

SDS-PAGE



 Tel: 1-631-559-9269 1-516-512-3133

 Email: info@creative-biomart.com  Fax: 1-631-938-8127

 45-1 Ramsey Road, Shirley, NY 11967, USA