

Recombinant Rat Cpb1 protein, His & T7-tagged

Cat. No. Cpb1-1437R **Lot. No.** (See product label)

SPECIFICATION

Product Overview	Recombinant Rat Cpb1 aa. (Trp120~Tyr415 (Accession # P19223) fused with N-terminal His & T7 tag was produced in E. coli cells.
Species	Rat
Source	E.coli
ProteinLength	Trp120~Tyr415
Description	Putative carboxypeptidase B protein.
Form	Freeze-dried powder
Molecular Mass	Predicted Molecular Mass: 37.5kDa.
Endotoxin	<1.0EU per 1g (determined by the LAL method)
Purity	>95%
Characteristic	The isoelectric point is 6.5.
Applications	SDS-PAGE; WB; ELISA; IP.
Stability	The thermal stability is described by the loss rate of the target protein. The loss rate was determined by accelerated thermal degradation test, that is, incubate the protein

 Tel: 1-631-559-9269 1-516-512-3133

 Email: info@creative-biomart.com  Fax: 1-631-938-8127

 45-1 Ramsey Road, Shirley, NY 11967, USA

at 37°C for 48h, and no obvious degradation and precipitation were observed. (Referring from China Biological Products Standard, which was calculated by the Arrhenius equation.) The loss of this protein is less than 5% within the expiration date under appropriate storage condition.

Storage	Avoid repeated freeze/thaw cycles. Store at 2-8°C for one month. Aliquot and store at -80°C for 12 months.
Storage buffer	Supplied as lyophilized form in PBS, pH7.4, containing 5% sucrose, 0.01% sarcosyl.
Reconstitution	Reconstitute in sterile PBS, pH7.2-pH7.4.

GENE INFORMATION

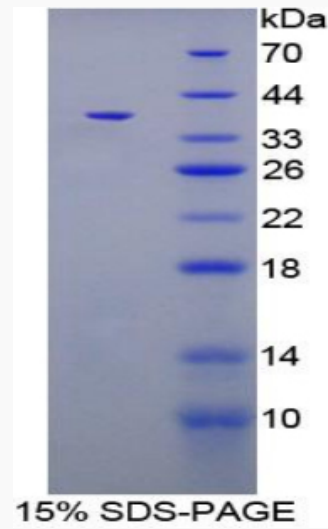
Gene Name	Cpb1 carboxypeptidase B1 [<i>Rattus norvegicus</i> (Norway rat)]
Official Symbol	Cpb1
Synonyms	Cpb1; carboxypeptidase B1; Cpb; carboxypeptidase B; carboxypeptidase B1 (tissue); pancreatic carboxypeptidase B1
Gene ID	24271
mRNA Refseq	NM_012533.2
Protein Refseq	NP_036665.2
UniProt ID	P19223

 Tel: 1-631-559-9269 1-516-512-3133

 Email: info@creative-biomart.com  Fax: 1-631-938-8127

 45-1 Ramsey Road, Shirley, NY 11967, USA

SDS-PAGE



 Tel: 1-631-559-9269 1-516-512-3133

 Email: info@creative-biomart.com  Fax: 1-631-938-8127

 45-1 Ramsey Road, Shirley, NY 11967, USA