

Recombinant Mouse Cpm Protein (Leu18-Ser423), C-His tagged


Cat. No. Cpm-6443M Lot. No. (See product label)

SPECIFICATION

Product Overview	Recombinant mouse Cpm (Leu18-Ser423) fused with the C-terminal His tag was expressed in mammalian cells.
Species	Mouse
Source	Mammalian Cells
ProteinLength	Leu18-Ser423
Form	Lyophilized powder/frozen liquid
Molecular Mass	44.66 kDa
Purity	> 90 % as determined by SDS-PAGE
Notes	For research use only.
Storage	Use a manual defrost freezer and avoid repeated freeze thaw cycles. Store at 2 to 8 centigrade for one week. Store at -20 to -80 centigrade for twelve months from the date of receipt.
Storage Buffer	Supplied as solution form in PBS or lyophilized from PBS.
Reconstitution	Reconstitute in sterile water for a stock solution.

 Tel: 1-631-559-9269 1-516-512-3133

 Email: info@creative-biomart.com  Fax: 1-631-938-8127

 45-1 Ramsey Road, Shirley, NY 11967, USA

Shipping

They are shipped out with dry ice/blue ice unless customers require otherwise.

GENE INFORMATION
Gene Name

Cpm carboxypeptidase M [*Mus musculus* (house mouse)]

Official Symbol

Cpm

Synonyms

CPM; carboxypeptidase M; AA589379; 1110060I01Rik; 5730456K23Rik; E030045M14Rik; MGC118152;

Gene ID

70574

mRNA Refseq

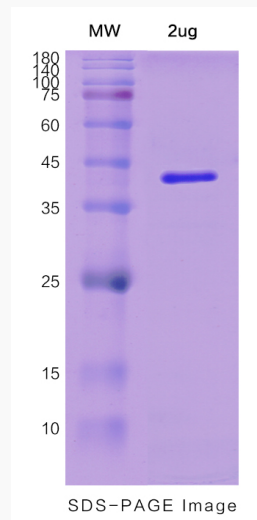
NM_027468


Protein Refseq

NP_081744

UniProt ID

Q80V42

SDS-PAGE


 Tel: 1-631-559-9269 1-516-512-3133

 Email: info@creative-biomart.com  Fax: 1-631-938-8127

 45-1 Ramsey Road, Shirley, NY 11967, USA