

Recombinant Mouse Cpq Protein (Lys19-Ser470), C-His tagged

Cat. No. Cpq-6771M **Lot. No.** (See product label)

SPECIFICATION

Product Overview	Recombinant mouse Cpq (Lys19-Ser470) fused with the C-terminal His tag was expressed in mammalian cells.
Species	Mouse
Source	Mammalian Cells
ProteinLength	Lys19-Ser470
Description	Predicted to enable metalloprotease activity and protein homodimerization activity. Predicted to be involved in peptide catabolic process; proteolysis; and thyroid hormone generation. Located in lysosome. Is expressed in genitourinary system. Orthologous to human CPQ (carboxypeptidase Q).
Form	Lyophilized powder/frozen liquid
Molecular Mass	49.72 kDa
Purity	> 90 % as determined by SDS-PAGE
Notes	For research use only.
Storage	Use a manual defrost freezer and avoid repeated freeze thaw cycles. Store at 2 to 8 centigrade for one week. Store at -20 to -80 centigrade for twelve months from the date of receipt.

 Tel: 1-631-559-9269 1-516-512-3133

 Email: info@creative-biomart.com  Fax: 1-631-938-8127

 45-1 Ramsey Road, Shirley, NY 11967, USA

Storage Buffer	Supplied as solution form in PBS or lyophilized from PBS.
Reconstitution	Reconstitute in sterile water for a stock solution.
Shipping	They are shipped out with dry ice/blue ice unless customers require otherwise.

GENE INFORMATION

Gene Name	Cpq carboxypeptidase Q [Mus musculus (house mouse)]
Official Symbol	Cpq
Synonyms	Cpq; carboxypeptidase Q; Hls2; Pgcp; Lal-1; 1190003P12Rik; 2610034C17Rik; carboxypeptidase Q; hematopoietic lineage switch 2; plasma glutamate carboxypeptidase; EC 3.4.17.-
Gene ID	54381
mRNA Refseq	NM_018755
Protein Refseq	NP_061225
UniProt ID	Q9WVJ3

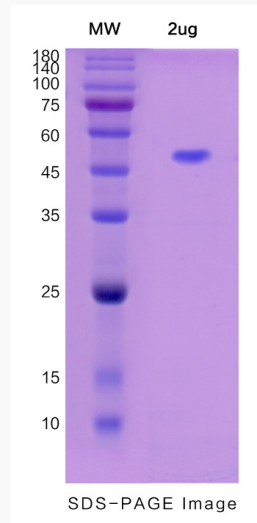
 Tel: 1-631-559-9269 1-516-512-3133

 Email: info@creative-biomart.com  Fax: 1-631-938-8127

 45-1 Ramsey Road, Shirley, NY 11967, USA



SDS-PAGE



Tel: 1-631-559-9269 1-516-512-3133

Email: info@creative-biomart.com Fax: 1-631-938-8127

45-1 Ramsey Road, Shirley, NY 11967, USA