

Recombinant Mouse Cr2 protein, His-tagged

Cat. No. Cr2-5383M Lot. No. (See product label)

SPECIFICATION

Product Overview	Recombinant Mouse Cr2 protein(P19070)(729-963aa), fused to N-terminal His tag, was expressed in Yeast.
Species	Mouse
Source	Yeast
ProteinLength	729-963aa
Form	If the delivery form is liquid, the default storage buffer is Tris/PBS-based buffer, 5%-50% glycerol. If the delivery form is lyophilized powder, the buffer before lyophilization is Tris/PBS-based buffer, 6% Trehalose, pH 8.0.
Molecular Mass	28 kDa
Purity	Greater than 90% as determined by SDS-PAGE.
Storage	Store at -20°C/-80°C upon receipt, aliquoting is necessary for mutiple use. Avoid repeated freeze-thaw cycles.
Reconstitution	Please reconstitute protein in deionized sterile water to a concentration of 0.1-1.0 mg/mL. We recommend to add 5-50% of glycerol (final concentration) and aliquot for long-term storage at -20°C/-80°C. Our default final concentration of glycerol is 50%.

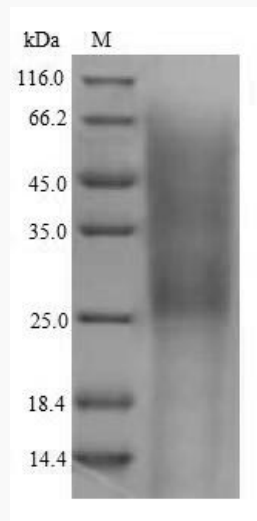
GENE INFORMATION

 Tel: 1-631-559-9269 1-516-512-3133

 Email: info@creative-biomart.com  Fax: 1-631-938-8127

 45-1 Ramsey Road, Shirley, NY 11967, USA

Gene Name	Cr2 complement receptor 2 [Mus musculus]
Official Symbol	Cr2
Synonyms	CR2; complement receptor 2; complement receptor type 2; complement C3d receptor; complement receptor type 1; expressed in B lymphocytes; Cr1; C3DR; CD21; CD35; Cr-1; Cr-2; MGC130295;
Gene ID	12902
mRNA Refseq	NM_007758
Protein Refseq	NP_031784

SDS-PAGE


 Tel: 1-631-559-9269 1-516-512-3133

 Email: info@creative-biomart.com  Fax: 1-631-938-8127

 45-1 Ramsey Road, Shirley, NY 11967, USA