

Recombinant Mouse Cr2 protein, His & T7-tagged

Cat. No. Cr2-837M Lot. No. (See product label)

SPECIFICATION

Product Overview	Recombinant Mouse Cr2 aa. (Cys463~Asp665 (Accession # P19070)) fused with N-terminal His & T7 tag was produced in E. coli cells.
Species	Mouse
Source	E.coli
ProteinLength	Cys463~Asp665
Form	Freeze-dried powder
Molecular Mass	Predicted Molecular Mass: 26.4kDa
Endotoxin	<1.0EU per 1g (determined by the LAL method)
Purity	>95%
Characteristic	The isoelectric point is 6.7.
Applications	SDS-PAGE; WB; ELISA; IP.
Stability	The thermal stability is described by the loss rate. The loss rate was determined by accelerated thermal degradation test, that is, incubate the protein at 37°C for 48h, and no obvious degradation and precipitation were observed. The loss rate is less than 5% within the expiration date under appropriate storage condition.

 Tel: 1-631-559-9269 1-516-512-3133

 Email: info@creative-biomart.com  Fax: 1-631-938-8127

 45-1 Ramsey Road, Shirley, NY 11967, USA

Storage	Avoid repeated freeze/thaw cycles. Store at 2-8°C for one month. Aliquot and store at -80°C for 12 months.
Storage buffer	Supplied as lyophilized form in 20mM Tris, 150mM NaCl, pH8.0, containing 1mM EDTA, 1mM DTT, 0.01% sarcosyl, 5% trehalose, and preservative.
Reconstitution	Reconstitute in sterile ddH ₂ O.

GENE INFORMATION

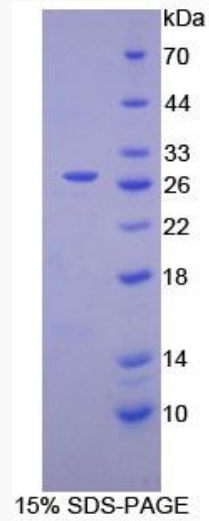
Gene Name	Cr2 complement receptor 2 [<i>Mus musculus</i> (house mouse)]
Official Symbol	Cr2
Synonyms	Cr1; C3DR; CD21; CD35; Cr-1; Cr-2; complement C3d receptor; complement receptor type 1; expressed in B lymphocytes; complement receptor type 2
Gene ID	12902
mRNA Refseq	NM_007758.2
Protein Refseq	NP_031784.1
UniProt ID	P19070

 Tel: 1-631-559-9269 1-516-512-3133

 Email: info@creative-biomart.com  Fax: 1-631-938-8127

 45-1 Ramsey Road, Shirley, NY 11967, USA

SDS-PAGE



 Tel: 1-631-559-9269 1-516-512-3133

 Email: info@creative-biomart.com  Fax: 1-631-938-8127

 45-1 Ramsey Road, Shirley, NY 11967, USA