

Recombinant Mouse Crh protein, His-KSI-tagged

Cat. No. Crh-7564M Lot. No. (See product label)

SPECIFICATION

Product Overview	Recombinant Mouse Crh protein(Q8CIT0)(145-185aa), fused with N-terminal His and KSI tag, was expressed in E.coli.
Species	Mouse
Source	E.coli
ProteinLength	145-185a.a.
Tag	His-KSI
Form	If the delivery form is liquid, the default storage buffer is Tris/PBS-based buffer, 5%-50% glycerol. If the delivery form is lyophilized powder, the buffer before lyophilization is Tris/PBS-based buffer, 6% Trehalose, pH 8.0.
Molecular Mass	20.1 kDa
Purity	Greater than 90% as determined by SDS-PAGE.
Storage	Store at -20°C/-80°C upon receipt, aliquoting is necessary for mutiple use. Avoid repeated freeze-thaw cycles.
Reconstitution	We recommend that this vial be briefly centrifuged prior to opening to bring the contents to the bottom. Please reconstitute protein in deionized sterile water to a concentration of 0.1-1.0 mg/mL.We recommend to add 5-50% of glycerol (final

 Tel: 1-631-559-9269 1-516-512-3133

 Email: info@creative-biomart.com  Fax: 1-631-938-8127

 45-1 Ramsey Road, Shirley, NY 11967, USA

concentration) and aliquot for long-term storage at -20°C/-80°C.

AA Sequence SEEPPISLDLTFHLLREVLEMARAEQLAQQAHSNRKLMEII

GENE INFORMATION

Gene Name [Crh corticotropin releasing hormone \[Mus musculus \]](#)

Official Symbol [Crh](#)

Synonyms CRH; corticotropin releasing hormone; corticoliberin; corticotropin releasing factor; corticotropin-releasing factor; corticotropin-releasing hormone; CRF; Gm1347; MGC151298;

Gene ID [12918](#)

mRNA Refseq [NM_205769](#)

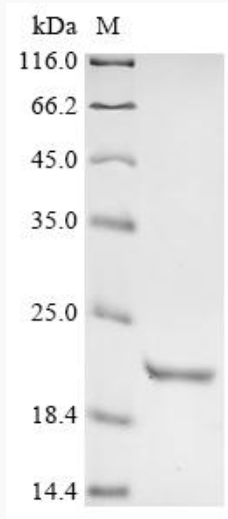
Protein Refseq [NP_991338](#)

 Tel: 1-631-559-9269 1-516-512-3133

 Email: info@creative-biomart.com  Fax: 1-631-938-8127

 45-1 Ramsey Road, Shirley, NY 11967, USA

SDS-PAGE



 Tel: 1-631-559-9269 1-516-512-3133

 Email: info@creative-biomart.com  Fax: 1-631-938-8127

 45-1 Ramsey Road, Shirley, NY 11967, USA