

Recombinant Mouse Crhr1 Protein, His-tagged

Cat. No. Crhr1-842M **Lot. No.** (See product label)

SPECIFICATION

Product Overview	Recombinant Mouse Crhr1 Protein (Ser24-Cys149) with His tag was expressed in E. coli.
Species	Mouse
Source	E.coli
ProteinLength	Ser24-Cys149
Description	<p>The protein encoded by this gene is a G-protein coupled receptor that binds corticotropin-releasing factor (CRH) and urocortin (UCN) with high affinity. The encoded protein upregulates adenylate cyclase activity and intracellular cAMP levels. This protein is essential for the activation of signal transduction pathways that regulate diverse physiological processes including stress, reproduction, immune response, and obesity. Several transcript variants encoding different isoforms have been found for this gene.</p>
Form	Freeze-dried powder
Molecular Mass	Predicted Molecular Mass: 17.8 kDa; Accurate Molecular Mass: 16 kDa
Purity	> 95%
Applications	Positive Control; Immunogen; SDS-PAGE; WB.

 Tel: 1-631-559-9269 1-516-512-3133

 Email: info@creative-biomart.com  Fax: 1-631-938-8127

 45-1 Ramsey Road, Shirley, NY 11967, USA

Stability	The thermal stability is described by the loss rate. The loss rate was determined by accelerated thermal degradation test, that is, incubate the protein at 37 centigrade for 48h, and no obvious degradation and precipitation were observed. The loss rate is less than 5% within the expiration date under appropriate storage condition.
Storage	Avoid repeated freeze/thaw cycles. Store at 2-8 centigrade for one month. Aliquot and store at -80 centigrade for 12 months.
Storage Buffer	20mM Tris, 150mM NaCl, pH8.0, containing 1mM EDTA, 1mM DTT, 0.01% SKL, 5% Trehalose and Proclin300.
Reconstitution	Reconstitute in 20mM Tris, 150mM NaCl (pH8.0) to a concentration of 0.1-1.0 mg/mL. Do not vortex.

GENE INFORMATION

Gene Name	Crhr1 corticotropin releasing hormone receptor 1 [Mus musculus (house mouse)]
Official Symbol	Crhr1
Synonyms	CRHR1; corticotropin releasing hormone receptor 1; corticotropin-releasing factor receptor 1; CRF-R1; CRFR-1; CRH-R1; CRF-R-1; CRH-R-1; CRF-R1alpha; CRF 1 receptor; corticotropin-releasing hormone receptor 1; Crhr; CRFR1; MGC124237; MGC124240;
Gene ID	12921
mRNA Refseq	NM_007762
Protein Refseq	NP_031788

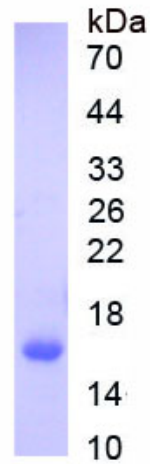
 Tel: 1-631-559-9269 1-516-512-3133

 Email: info@creative-biomart.com  Fax: 1-631-938-8127

 45-1 Ramsey Road, Shirley, NY 11967, USA

UniProt ID

Q3ZAT0



 Tel: 1-631-559-9269 1-516-512-3133

 Email: info@creative-biomart.com  Fax: 1-631-938-8127

 45-1 Ramsey Road, Shirley, NY 11967, USA