

## Recombinant Rat Crhr1 Protein, His-tagged

**Cat. No.** Crhr1-843R    **Lot. No.** (See product label)

### SPECIFICATION

<b>Product Overview</b>	Recombinant Rat Crhr1 Protein (Ser24-Cys149) with His tag was expressed in E. coli.
<b>Species</b>	Rat
<b>Source</b>	E.coli
<b>ProteinLength</b>	Ser24-Cys149
<b>Description</b>	This gene encodes a member of the G-protein coupled receptor family. The encoded protein is a receptor for corticotropin-releasing factor (CRH) and urocortin (UCN). The interaction of this protein with CRH and UCN triggers G-protein coupled signaling. This protein plays a pivotal role in mediating the CRH-elicited effects in depression and anxiety. Alternatively spliced transcript variants have been found for this gene.
<b>Form</b>	Freeze-dried powder
<b>Molecular Mass</b>	Predicted Molecular Mass: 17.8 kDa; Accurate Molecular Mass: 16 kDa
<b>Purity</b>	> 95%
<b>Applications</b>	Positive Control; Immunogen; SDS-PAGE; WB.
<b>Stability</b>	The thermal stability is described by the loss rate. The loss rate was determined by accelerated thermal degradation test, that is, incubate the protein at 37 centigrade for 48h, and no obvious degradation and precipitation were observed. The loss rate is

 Tel: 1-631-559-9269    1-516-512-3133

 Email: [info@creative-biomart.com](mailto:info@creative-biomart.com)     Fax: 1-631-938-8127

 45-1 Ramsey Road, Shirley, NY 11967, USA

less than 5% within the expiration date under appropriate storage condition.

**Storage**

Avoid repeated freeze/thaw cycles. Store at 2-8 centigrade for one month. Aliquot and store at -80 centigrade for 12 months.

**Storage Buffer**

20mM Tris, 150mM NaCl, pH8.0, containing 1mM EDTA, 1mM DTT, 0.01% SKL, 5% Trehalose and Proclin300.

**Reconstitution**

Reconstitute in 20mM Tris, 150mM NaCl (pH8.0) to a concentration of 0.1-1.0 mg/mL. Do not vortex.

## GENE INFORMATION

**Gene Name**

[Crhr1 corticotropin releasing hormone receptor 1 \[ Rattus norvegicus \(Norway rat\) \]](#)

**Official Symbol**

[Crhr1](#)

**Synonyms**

CRHR1; corticotropin releasing hormone receptor 1; corticotropin-releasing factor receptor 1; CRF1; CRF-R; CRF-R1; CRFR-1; CRH-R1; CRF-R-1; CRH-R 1; CRH-R-1; corticotropin releasing hormone 1; corticotropin-releasing hormone receptor 1; corticotrophin releasing hormone receptor 1;

**Gene ID**

[58959](#)

**mRNA Refseq**

[NM\\_030999](#)

**Protein Refseq**

[NP\\_112261](#)

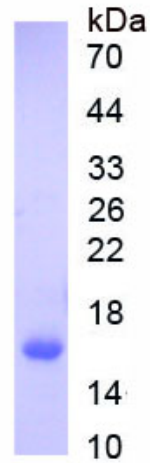
**UniProt ID**

[P35353](#)

 Tel: 1-631-559-9269 1-516-512-3133

 Email: [info@creative-biomart.com](mailto:info@creative-biomart.com)  Fax: 1-631-938-8127

 45-1 Ramsey Road, Shirley, NY 11967, USA



 Tel: 1-631-559-9269 1-516-512-3133

 Email: [info@creative-biomart.com](mailto:info@creative-biomart.com)  Fax: 1-631-938-8127

 45-1 Ramsey Road, Shirley, NY 11967, USA