

Recombinant Mouse Crlf1 protein, His & T7-tagged

Cat. No. Crlf1-1429M **Lot. No.** (See product label)

SPECIFICATION

Product Overview	Recombinant Mouse Crlf1 aa. (Arg110~Asp408 (Accession # Q9JM58) fused with N-terminal His & T7 tag was produced in E. coli cells.
Species	Mouse
Source	E.coli
ProteinLength	Arg110~Asp408
Description	This gene encodes a member of the cytokine type I receptor family. The encoded protein functions as a cytokine receptor subunit and may be involved in immune system regulation and fetal development.
Form	Freeze-dried powder
Molecular Mass	Predicted Molecular Mass: 37.6kDa.
Endotoxin	<1.0EU per 1g (determined by the LAL method)
Purity	>95%
Characteristic	The isoelectric point is 8.8.
Applications	SDS-PAGE; WB; ELISA; IP.

 Tel: 1-631-559-9269 1-516-512-3133

 Email: info@creative-biomart.com  Fax: 1-631-938-8127

 45-1 Ramsey Road, Shirley, NY 11967, USA

Stability The thermal stability is described by the loss rate of the target protein. The loss rate was determined by accelerated thermal degradation test, that is, incubate the protein at 37°C for 48h, and no obvious degradation and precipitation were observed. (Referring from China Biological Products Standard, which was calculated by the Arrhenius equation.) The loss of this protein is less than 5% within the expiration date under appropriate storage condition.

Storage Avoid repeated freeze/thaw cycles. Store at 2-8°C for one month. Aliquot and store at -80°C for 12 months.

Storage buffer Supplied as lyophilized form in PBS, pH7.4, containing 5% trehalose, 0.01% sarcosyl.

Reconstitution Reconstitute in sterile PBS, pH7.2-pH7.4.

GENE INFORMATION

Gene Name [Crlf1 cytokine receptor-like factor 1 \[Mus musculus \(house mouse\) \]](#)

Official Symbol [Crlf1](#)

Synonyms Crlf1; cytokine receptor-like factor 1; NR6; CLF-1; CRLM3; NR6.1; CRLM-3; cytokine receptor-like molecule 3; cytokine-like factor 1; novel cytokine receptor 6

Gene ID [12931](#)

mRNA Refseq [NM_018827.3](#)

Protein Refseq [NP_061297.1](#)

UniProt ID [Q9JM58](#)

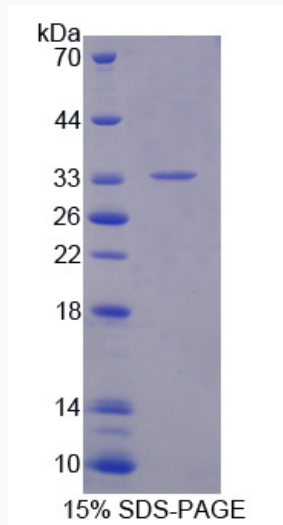
 Tel: 1-631-559-9269 1-516-512-3133

 Email: info@creative-biomart.com  Fax: 1-631-938-8127

 45-1 Ramsey Road, Shirley, NY 11967, USA



SDS-PAGE



Tel: 1-631-559-9269 1-516-512-3133

Email: info@creative-biomart.com Fax: 1-631-938-8127

45-1 Ramsey Road, Shirley, NY 11967, USA