

Recombinant Mouse Crf2 protein, His-tagged

Cat. No. Crf2-6744M Lot. No. (See product label)

SPECIFICATION

Product Overview	Recombinant Mouse Crf2 protein(Q8CII9-1)(Ala20-Pro232), fused with C-terminal His tag, was expressed in HEK293.
Species	Mouse
Source	HEK293
ProteinLength	Ala20-Pro232
Tag	C-His
Form	Supplied as 0.22µm filtered solution in PBS (pH 7.4).
Molecular Mass	The protein has a predicted MW of 23.6 kDa. Due to glycosylation, the protein migrates to 35-40 kDa based on Tris-Bis PAGE result.
Endotoxin	Less than 1EU per µg by the LAL method.
Purity	> 95% as determined by Tris-Bis PAGE;> 95% as determined by HPLC
Storage	Valid for 12 months from date of receipt when stored at -80°C. Recommend to aliquot the protein into smaller quantities for optimal storage. Please do not repeated freeze-thaw cycles.
Reconstitution	It is recommended that sterile water be added to the vial to prepare a stock solution of

 Tel: 1-631-559-9269 1-516-512-3133

 Email: info@creative-biomart.com  Fax: 1-631-938-8127

 45-1 Ramsey Road, Shirley, NY 11967, USA

0.2 ug/ul. Centrifuge the vial at 4°C before opening to recover the entire contents.

GENE INFORMATION

Gene Name [Crlf2 cytokine receptor-like factor 2 \[Mus musculus \]](#)

Official Symbol [Crlf2](#)

Synonyms CRLF2; cytokine receptor-like factor 2; CRLM-2; delta 1; TSLP receptor; lymphocyte antigen 114; type I cytokine receptor delta 1; cytokine receptor-like molecule 2; thymic stromal lymphopoietin protein receptor; thymic stromal-derived lymphopoietin, receptor; transmembrane phosphoinositide 3-phosphatase and tensin homolog 2; CRLM2; Ly114; Tpte2; Tslpr;

Gene ID [57914](#)

mRNA Refseq [NM_001164735](#)

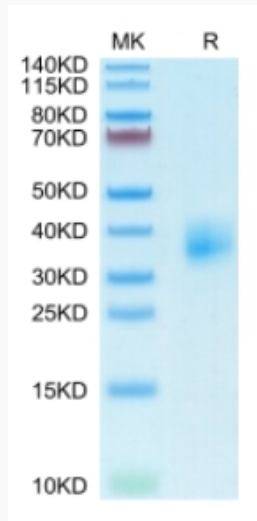
Protein Refseq [NP_001158207](#)

 Tel: 1-631-559-9269 1-516-512-3133

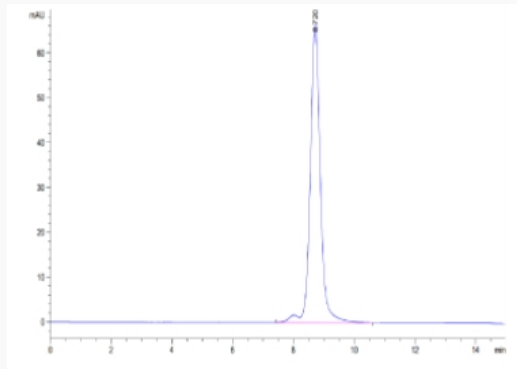
 Email: info@creative-biomart.com  Fax: 1-631-938-8127

 45-1 Ramsey Road, Shirley, NY 11967, USA

Tris-Bis PAGE



SEC-HPLC



 Tel: 1-631-559-9269 1-516-512-3133

 Email: info@creative-biomart.com  Fax: 1-631-938-8127

 45-1 Ramsey Road, Shirley, NY 11967, USA