

Recombinant Rat Crp protein, His & T7-tagged

Cat. No. Crp-7776R **Lot. No.** (See product label)

SPECIFICATION

Product Overview	Recombinant Rat Crp aa. (His20~Ser230 (Accession # P48199)) fused with N-terminal His & T7 tag was produced in E. coli cells.
Species	Rat
Source	E.coli
ProteinLength	His20~Ser230
Description	Glycoprotein of the acute phase response.
Form	Freeze-dried powder
Molecular Mass	Predicted Molecular Mass: 27.1kDa
Endotoxin	<1.0EU per 1g (determined by the LAL method)
Purity	>95%
Characteristic	The isoelectric point is 5.7.
Applications	SDS-PAGE; WB; ELISA; IP
Stability	The thermal stability is described by the loss rate. The loss rate was determined by accelerated thermal degradation test, that is, incubate the protein at 37°C for 48h,

 Tel: 1-631-559-9269 1-516-512-3133

 Email: info@creative-biomart.com  Fax: 1-631-938-8127

 45-1 Ramsey Road, Shirley, NY 11967, USA

and no obvious degradation and precipitation were observed. The loss rate is less than 5% within the expiration date under appropriate storage condition.

Storage

Avoid repeated freeze/thaw cycles. Store at 2-8°C for one month. Aliquot and store at -80°C for 12 months.

Storage buffer

Supplied as lyophilized form in 20mM Tris, 150mM NaCl, pH8.0, containing 1mM EDTA, 1mM DTT, 0.01% sarcosyl, 5% trehalose, and preservative

Reconstitution

Reconstitute in ddH₂O.

GENE INFORMATION

Gene Name

Crp C-reactive protein [*Rattus norvegicus* (Norway rat)]

Official Symbol

Crp

Synonyms

Crp; C-reactive protein; Aa1249; Ac1262; Ab1-341; Ab2-196; Ac1-114; Ac2-069; Ba2-693; C-reactive protein, member of the pentraxin family; C-reactive protein, pentraxin-related; C-reactive protein, petaxin related

Gene ID

25419

mRNA Refseq

NM_017096.3

Protein Refseq

NP_058792.1

UniProt ID

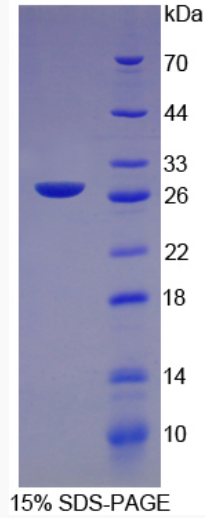
P48199

 Tel: 1-631-559-9269 1-516-512-3133

 Email: info@creative-biomart.com  Fax: 1-631-938-8127

 45-1 Ramsey Road, Shirley, NY 11967, USA

SDS-PAGE



 Tel: 1-631-559-9269 1-516-512-3133

 Email: info@creative-biomart.com  Fax: 1-631-938-8127

 45-1 Ramsey Road, Shirley, NY 11967, USA